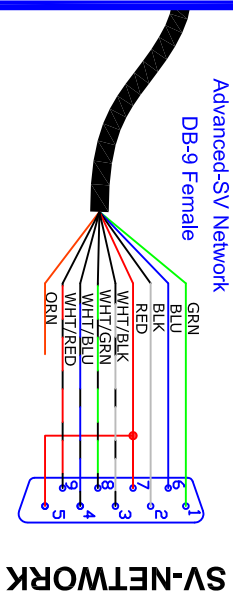
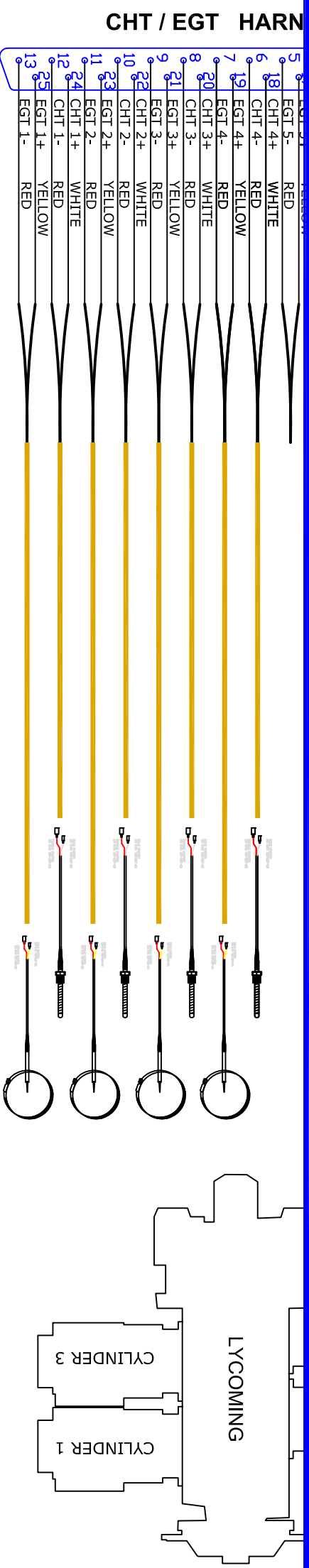
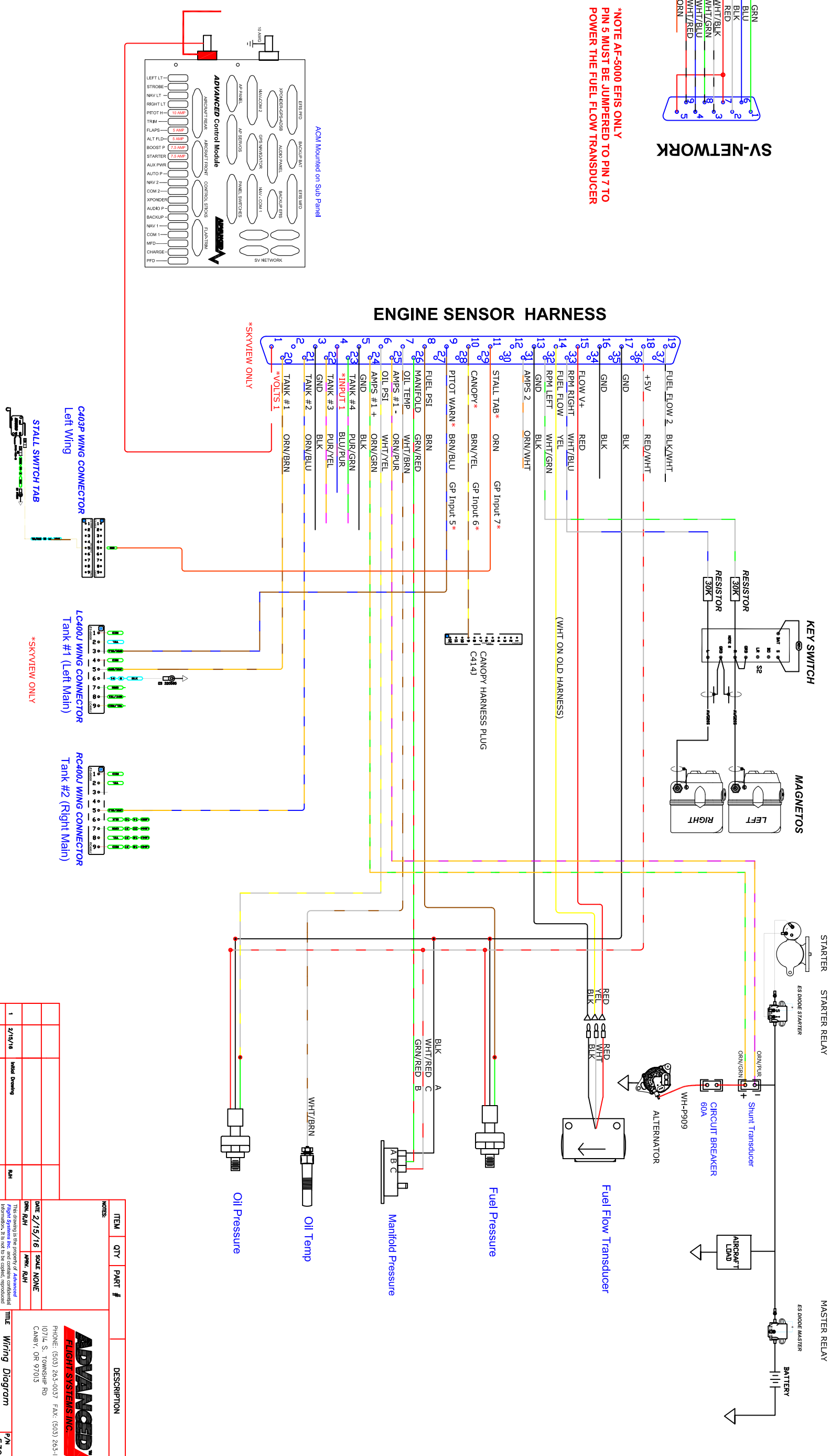


SV-EMS-220



***NOTE AF-5000 EFIS ONLY
PIN 5 MUST BE JUMPERED TO PIN 7 TO
POWER THE FUEL FLOW TRANSDUCER**

ENGINE SENSOR HARNESS



REV	DATE	DESCRIPTION	REV	BY
1	2/19/16	Initial Drawing		

ITEM	QTY	PART #	DESCRIPTION
1			Wiring Diagram

DATE	SCALE
2/15/16	NONE
DATE	SCALE
2/15/16	NONE

DATE	SCALE
2/15/16	NONE

DATE	SCALE
2/15/16	NONE

DATE	SCALE
2/15/16	NONE

DATE	SCALE
2/15/16	NONE

DATE	SCALE
2/15/16	NONE

ADVANCED FLIGHT SYSTEMS INC.

PHONE: (503) 263-0037 FAX: (503) 263-1138
10714 S. TOWNSHIP RD
CANBY, OR 97103

SV-EMS RV-14 Harness 33914

REV: 6