



AVIONICS CATALOG

DYNON SKYVIEW AND ADVANCED AF-5000 SERIES FOR
EXPERIMENTAL AND LIGHT SPORT AIRCRAFT



A Bit About Us

In 2000, we were frustrated with the lack of affordable modern avionics for sport aircraft and decided to do something about it. The result? Dynon led a sea change in modern GA aircraft avionics, equipping over 15,000 sport aircraft owners that previously couldn't imagine an affordable glass cockpit.

A SkyView or Advanced panel can truly do it all; your primary flight instruments, full-featured engine monitor with fuel computer, a class-leading moving map and navigation platform, ADS-B traffic and weather, integrated Mode-S Transponder with ADS-B Out capability, an approach-capable autopilot that offers simplified or expert controls, a revolutionary COM radio, and more. Over the last couple of years, we re-introduced our flagship system with the addition of SkyView Touch™, dedicated knob and autopilot control panels, video input capability, wi-fi connection to mobile apps, and hundreds of software features like our "six-pack" flight instrument mode.

In 2016, we're changing the game again. SkyView HDX is a clear, vibrant high-resolution display with breakthrough comfort control ergonomics, a redesigned touch interface, and beautifully-designed all metal and glass construction that is worthy of your aircraft. SkyView SE is the entry-level successor to Dynon's simple and intuitive legacy D100 series products that allows simple VFR aircraft to affordably equip for 2020 ADS-B compliance. The Advanced AF-5700 features an expansive, 12.1" display that fuses touch and physical controls to reduce the installation footprint with a minimized bezel. All of these innovations are designed to reduce your workload so you can just... Go Fly™.

Our Values

We are THE avionics company for light aircraft. It's all we do. We constantly innovate but firmly stand behind our products with the industry's best support. We don't think you should have to cut a new panel every time we come up with a new idea, and the product you buy should be supported for years. The first SkyView ADAHRS ever shipped is fully compatible with the latest SkyView HDX, SE, and Advanced AF-5000 series displays. The EFIS-D10A we first made a decade ago is still sold and supported today, and can now be installed in type certificated aircraft through EAA's breakthrough STC.

When you buy Dynon, you're buying from a US company. We design, engineer, manufacture, and support our products in Woodinville, Washington and Canby, Oregon. Most of our engineers are pilots, many of them homebuilders. We fly behind the products we build, and we think it shows. Half of Dynon Avionics' staff is manufacturing (in those same US offices) because building our products in-house is the most effective way to control quality and cost.

We don't think your avionics should demand that you be an engineer or "beta tester." Though your aircraft may be experimental, your avionics should run stable software that is tested, documented, and a delight to use. The modules that comprise your system should be designed for one another, with robust and redundant data connections that are hardened against failure. You're a builder, but you're probably not an electrical engineer. Unlike the competition that requires you build complicated harnesses or buy expensive ones, many Dynon components connect via affordable, prefabricated SkyView Network cables. Other Dynon harnesses are color-coded and match our manuals to help you speed through installation. For those that want the fastest path to flight, we now offer complete "Quick Panels". These complete avionics panel solutions are professionally engineered, fully assembled, tested, configured, and ready to install in your aircraft. Best of all, they're made by the people that design and manufacture the avionics.





SKYVIEW SYSTEM

SkyView Introduction	3-4
SkyView HDX	5
SkyView Touch	6
SkyView Classic	6
SkyView SE	6
SkyView Features	7-8

ADVANCED SYSTEM

Advanced Introduction	9-10
AF-5600 Display	11
AF-5800 Display	11
AF-5700 Display	12
AF-5500 Display	12
AF-5400 Display	12
Advanced Features	13-14

SYSTEM COMPONENTS

Components	15-18
------------------	-------

PANEL CONFIGURATION POSSIBILITIES

Capabilities and Equipping	19
Light and Sporty and Weekend Warrior	20
Cross-Country Cruiser	21
The Airliner	22

SYSTEM WORKSHEET

Primary Flight Displays and Navigation	23
Dynon AOA/Pitot Probes	23
Engine Monitoring	24
Dynon Autopilot	24
Transponders, ADS-B In/Out, Traffic and Weather ..	24
Radios, Intercom and Audio	24

PANEL PLANNER (ACTUAL SIZE CUT OUTS)

SkyView 10" Display (Touch, Classic and SE)	25
SkyView 7" Display (Classic and SE)	26
Dynon Control Panels (Horizontal)	26
Dynon Control Panels (Vertical)	27
SkyView HDX 7" Display	27
SkyView HDX 10" Display	28
AF-5600 10.4" Display	29
AF-5500 8.4" Display	30

SkyView™

We invite you to discover the SkyView™ family of products. Go Fly.™

You want to fly your plane, not mess with a computer. From the beginning, Dynon's pilots and engineers designed SkyView to have a clean and intuitive pilot interface through its on-screen buttons and joystick knobs. Between our optional control panels with dedicated hard keys and touchscreen-enabled SkyView HDX and SkyView Touch™ products, there's a pilot interface for every flying style. So whether you're new to glass cockpit technology or fly 777s at work, there's a SkyView panel for you.

If you're new to glass, SkyView's "six-pack" flight instrumentation mode lets you fly the gauges you're used

changes. If you have the panel space, these modules are simply the right way to interact with your avionics.

The touchscreens on SkyView HDX and SkyView Touch are designed to complement SkyView's tactile interface, not completely replace it. This allows you to rely on SkyView's complete set of buttons and knobs when you need them most; critical for effective control in turbulence. While you usually hold a smartphone or tablet in your hands, your EFIS screen is at the end of your outstretched arm, and it's moving with the aircraft, not with you. These two things conspire to make touch control less than ideal when things



to with the digital "EFIS glass cockpit" presentation just a few buttons away. Try out the "EFIS" style as you get comfortable. Or not. It's up to you. Learn about SkyView features with extensive training videos on The Dynon Channel.

If you like dedicated controls, you'll be right at home with SkyView. All SkyView displays have a complete set of buttons and knobs - even those that feature a touchscreen. The optional knob control panel assigns the items you adjust most to dedicated knobs to lower pilot workload. Similarly, the Autopilot control panel removes the need to ever use the on-screen menus for Autopilot mode

get bumpy. Starting with those challenges, we designed a touch interface specifically for the cockpit. Touch actions are designed to be easy to learn and used in places where they can reduce pilot workload the most. For example, touching the transponder or autopilot status displays instantly enables those features' controls, eliminating the normal button pushes required use to access those menus. Similarly, touching a PFD item that has an adjustable bug instantly reassigns a SkyView joystick knob to the touched bug, eliminating the need to manually re-task that knob. Using your fingertips to pan, zoom, and select items on the map works just as you'd expect it to. SkyView HDX and SkyView Touch displays have the same installation

Photo courtesy of Remos Aircraft.

footprint as original SkyView displays, enabling an affordable upgrade path that doesn't require cutting a new panel or even a single wire change.

SkyView SE is the simplest and least expensive member of the SkyView family. SkyView SE displays, made specifically for VFR aircraft and pilots, feature simple and clear displays, and almost no menus to navigate in flight. At the same time, SkyView SE retains innovative Dynon capabilities like SkyView's revolutionary COM radio interface and optional 2-axis autopilot. By removing SkyView's mapping capabilities, even the 7" SkyView SE display has a large, easy-to-read Primary Flight Display, including pilot-selectable "steam gauges."

With a simplified feature set, SkyView SE is the successor to Dynon's legacy D100 series products. SkyView SE systems equipped like D100 series products are similarly priced.



SKYVIEW SYSTEMS

From the entry-level SkyView SE to the new flagship SkyView HDX, there's now a SkyView system for every aircraft configuration and budget.

INTRODUCING HDX™ THE PREMIER SkyView™ EXPERIENCE

SkyView HDX is the new flagship SkyView system from Dynon, the market leader in experimental and light sport avionics. SkyView HDX features improved displays, beautiful design, unrivaled control ergonomics, and an upgraded touch interface. SkyView HDX displays are compatible with all existing SkyView components and feature identical mounting profiles and electrical connections.



10" Display



7" Display

HD Clear, Vibrant Displays: SkyView HDX features brighter, higher-resolution HD displays with wider viewing angles and improved anti-reflective properties for the sharpest picture ever.

Beautiful Design: SkyView HDX's modern, elegant design features robust metal and glass construction that is worthy of your aircraft.

Unrivaled Control Ergonomics: SkyView HDX expands the SkyView philosophy of combining full physical controls with a touchscreen. SkyView HDX's angled control panel allows for natural hand positioning, reducing fatigue. The wide, sculpted ledge allows you to anchor your hand for precise control in turbulence. New knobs have positive and crisp movement, and all controls are now fully-backlit for night flight.

Improved Touch Interface: SkyView HDX features icon-driven touch controls and simplified screen navigation for reduced workload. The new engine monitor instrument band along the bottom of the screen affords an ideal instrument scan. The expansive glass display features edge-to-edge touchability with no bezel in the way.

Capable and Compatible: SkyView HDX utilizes the same components and modules as existing SkyView systems. It also features the same mounting footprint and wiring as other SkyView displays, allowing drop-in upgrades for pilots already flying behind SkyView. SkyView HDX displays can also connect to SkyView Touch and SkyView Classic displays.

PART#	NOTES	PRICE
SV-HDX1100	10" HD Touch Screen	\$4490
SV-HDX800	7" HD Touch Screen	\$3190

SKYVIEW TOUCH

The breakthrough, best-selling SkyView Touch system set the standard for marrying intuitive touchscreen control with a full set of hard, tactile controls for use in turbulence. SkyView Classic, SkyView Touch, and SkyView HDX displays can be mixed in an aircraft.



10" Display

PART#	NOTES	PRICE
SV-D1000T	10" Touch Screen	\$3905

SKYVIEW CLASSIC

The original next generation EFIS. Even without a touch screen, SkyView's intuitive controls and pilot-designed interface are designed to work in your cockpit. SkyView Classic, SkyView Touch, and SkyView HDX displays can be mixed in an aircraft.



10" Display



7" Display

PART#	NOTES	PRICE
SV-D1000	10" Screen	\$3510
SV-D700	7" Screen	\$2610

SKYVIEW SE

SkyView SE displays are made specifically for VFR aircraft and pilots who want the most intuitive flight and engine instruments on the market. They feature simple and clear displays, with almost no menus to navigate in flight. SkyView SE systems omit mapping, synthetic vision, and IFR capabilities to offer an affordable SkyView-based entry-level system. At the same time, SkyView SE retains modern, innovative Dynon EFIS capabilities like SkyView's revolutionary COM radio interface and 2-axis autopilot with simplified controls. For aircraft in the US market, SkyView SE systems equipped with Dynon's Mode S transponder and SV-GPS-2020 offer the lowest cost integrated glass panel system meeting FAA 2020 ADS-B Out requirements. SkyView SE displays can only connect to other SkyView SE displays.



10" Display



7" Display

PART#	NOTES	PRICE
SV-D900	10" Screen	\$3010
SV-D600	7" Screen	\$1760

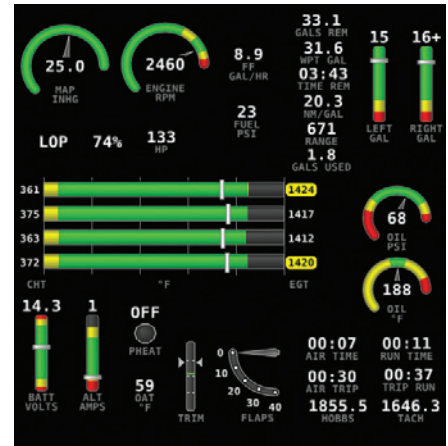
SKYVIEW FEATURES



SkyView's PFD display enhances situational awareness with realistic and accurate 3D depictions of runways, obstacles, terrain, and water.



New to glass? SkyView's "six-pack" mode bridges retro analog gauges with the state-of-the-art.



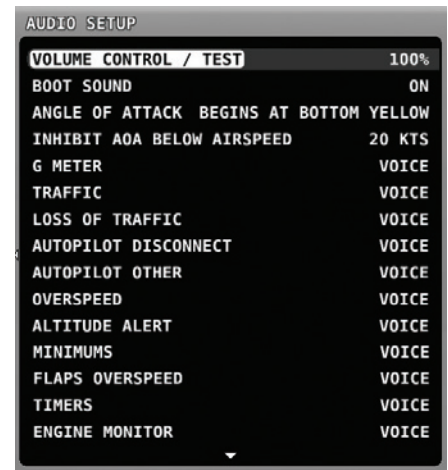
The tools you need to completely manage your power plant, including the industry's only automatic EGT lean/rich mixture detection that requires no pilot action and the most accurate percent power calculations possible.



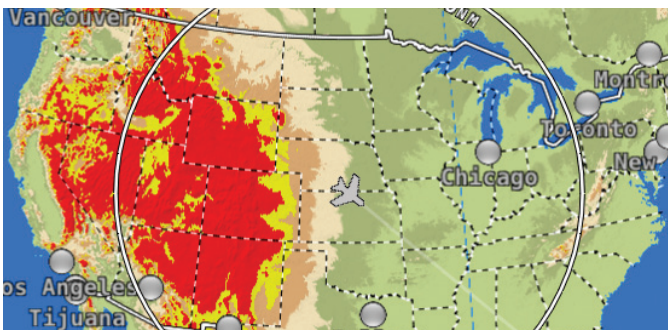
Connect up any device with S-Video or composite output with the optional video input adapter. Perhaps a forward looking taxi camera for your tail-dragger.



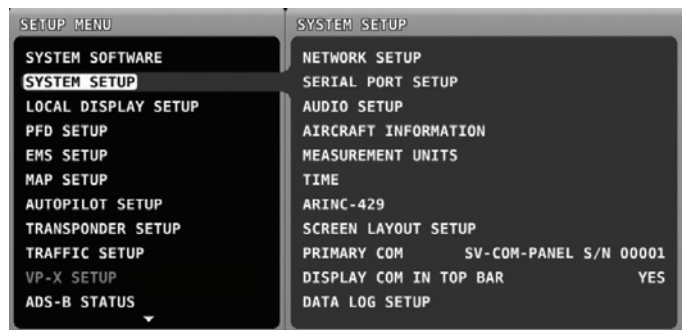
Equip with the SV-ADSB-470 (US-only) to gain graphical NEXRAD weather radar imagery, text METARs, TAFs, winds aloft, traffic, and more.



Voice alerts detail specific warning and caution conditions as they occur. A tone that gains intensity as your angle-of-attack increases helps you grease your landings and avoid stalls before they happen.



SkyView's free worldwide terrain data is the highest resolution available. Terrain colors are designed to look similar to charts while you're en route. They alert in vibrant yellow and red when altitude clearance is a factor.



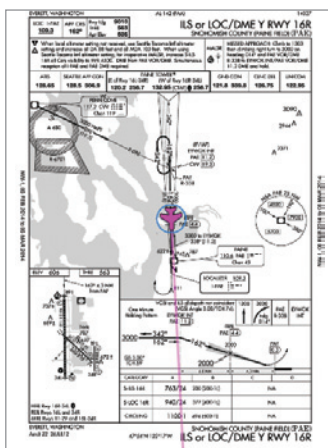
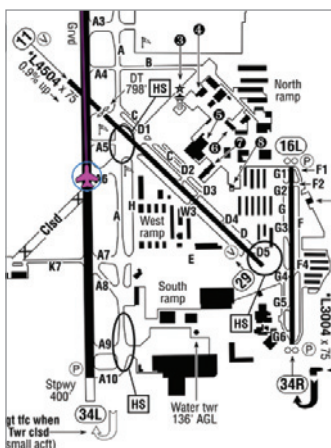
You shouldn't have to be a computer programmer to install your avionics: An intuitive, hierarchical setup menu helps you configure your system with ease.



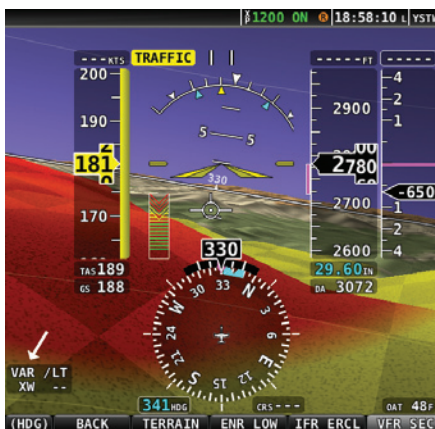
Point at airports, airspaces and more for instant information about them right on the map. From there, one button press gets you virtually all the information available for airports, including TPA, frequencies, services, charts, weather, and even the airport facility directory remarks.



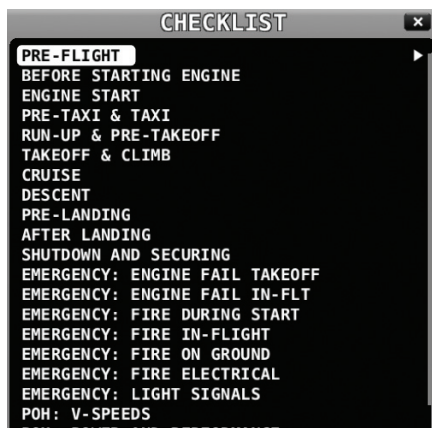
SkyView's navigation engine flies like you would. It anticipates waypoints and turns just before them to avoid needless overshoots. You can even display the graphics and waypoints from external IFR GPS flight plans.



With procedure charts (plates), airport diagrams (including ~5000 Flight Guide diagrams in the US), IFR en route charts, VFR sectionals, and SkyView's own map, you can truly achieve a paperless cockpit at the lowest prices in the industry.



Predictive terrain alerts dynamically shade terrain in yellow or red, based on the aircraft's projected flight path.



Checklists help remove paper clutter from the aircraft. Add as many checklists as you like - they're easily created and edited on any computer.



Plan your flight at home using your favorite planning application, then save time at the airplane by sending the planned route to your SkyView system via the Wi-Fi Adapter.

ADVANCED™

A DYNON COMPANY

Advanced Flight Systems built the first color LCD based Engine Monitor for homebuilt aircraft in 1999. The AF-2500 went on to become one of the most popular engine monitors.

In 2004, AFS was among the first companies to debut a stand-alone AOA indicator - long before the rest of the industry started realizing their safety benefits. Those patented AOA PRO Sport line of products laid the foundation for the on-screen AOA gauge that every Advanced EFIS system can display.

Today, Advanced offers a full range of EFIS displays to fully outfit your aircraft. At Advanced, our success is built on customer support, and we are proud of the solid reputation we have earned as we continue to introduce new and exciting products.

AFS was acquired by Dynon Avionics in 2013. As part of the Dynon family, AFS EFIS systems now utilize the full complement of SkyView components and modules. Led by the flagship 12.1" AF-5700 and AF-5800 displays, the AF-5000 series can do it all. AFS-equipped panels are particularly

popular with pilots of IFR-equipped aircraft.

WE FLY IT

AFS engineers have spent thousands of hours of actual flight time in VFR and IFR conditions to develop a superior pilot interface. That means you can respond quickly to ATC instructions and information input in seconds, without searching through multiple sub-menus. With our 11 button keypad, rugged joystick, encoder knobs and Touch Screen, flying is easier in all conditions. The AFS Pilot Interface is designed to take the stress out of flying.

TOUCH INTERFACE

Designed to simplify, our touch interface includes dedicated menus and intuitive multi-touch gestures. Interface and control of the EFIS, Autopilot, Radio, Transponder, Audio-Panel (and much more) have received countless hours of engineering and flight time to create the best possible Touch Screen Control. A full set of hardware buttons, encoder knobs, and a joystick allow offer physical redundancy and positive, tactile control in turbulence.



THE SOLUTION IS SIMPLICITY

- Our high-resolution 4:3 aspect ratio screens provide maximum screen area for a clean layout.
- Our three, high-quality encoders provide an intuitive user-interface eliminating complicated sub-menus.
- Bottom buttons act as a numeric keyboard. Enter a new heading or assigned altitude in seconds.
- Screen checklists are easy to use, even in an emergency.

SAFETY FIRST

- Patented AOA algorithm alerts you when you are at risk of a stall.
- Landing gear warning system - designed for both standard and amphibious aircraft.
- Calculate your CG and load with the Weight and Balance page. No more guessing.
- Intelligent Aircraft Maintenance Log will track scheduled maintenance. No more searching the log books to find out if it's time to change the oil or the ELT battery.

ADVANCED DISPLAYS

All AF-5000 EFIS displays utilize a high quality sunlight readable high resolution Touch Screen LCD screen. The AF-5800, AF-5600 and AF-5500 each have 18 buttons, three knobs and a joystick for a superior pilot interface. All displays include five RS-232 serial ports, two USB ports, SD card, Ethernet and the Advanced-SV Network connection.

10.4" AF-5600 DISPLAY



The 4:3 aspect ratio touchscreen display gives you a wide and tall picture that affords exceptional situational awareness. Additional buttons and knobs along the right side of the display dynamically reconfigure to the task at hand, freeing you up from hunting for features deep in menus. Connect multiple screens together and you can display any combination of EFIS, Engine Monitor, and Map across your screens. All AF-5000 displays now use the same modules and components as SkyView for the most affordable AFS systems ever.

PART#	NOTES	PRICE
AF-5600T	10.4" Touch Screen	\$4200

12.1" AF-5800 DISPLAY



A large, 12.1" touchscreen display with the same full complement of knobs, buttons, and joysticks as the 10" AF-5600. It won't fit in every aircraft, but if your panel supports it, the AF-5800 is an expansive window of situational awareness.

PART#	NOTES	PRICE
AF-5800T	12.1" Touch Screen	\$5200

12.1" AF-5700 DISPLAY



The new AF-5700 touchscreen display - featuring a new ADVANCED Touch interface - is the smallest form factor 12" EFIS available. The display combines the largest-in-class 12.1" screen with a minimized installation footprint. With its new ADVANCED Touch interface, the AF-5700 gives pilots the opportunity to install a large screen EFIS in an instrument panel that previously could not support one.

PART#	NOTES	PRICE
AF-5700T	12.1" Touch Screen	\$4800

8.4" AF-5500 DISPLAY



The same AF-5000 series features in a smaller package. The AF-5500 touchscreen display features a clear and easy to read airspeed indication with user adjustable color ranges. The altimeter is set using a familiar and convenient adjustment knob. Other flight instruments functions include a slip ball and user-configurable g-meter.

PART#	NOTES	PRICE
AF-5500T	8.4" Touch Screen	\$4000

8.4" AF-5400 DISPLAY



The AF-5400 is designed to be a drop-in replacement for existing AF-3500/4500 customers. No need to cut a new panel. It has the same AF-5000 series features as the rest of the line, including a high-resolution touchscreen, interactive Check-Lists, Radio Tuning, Remote Audio Panel, Sectionals, IFR Charts, Remote Mode-S Transponder, Video Input, and more.

PART#	NOTES	PRICE
AF-5400T	8.4" Touch Screen	\$4495

ADVANCED FEATURES



Weight & Balance: Instantly calculate your CG and load with our Weight and Balance page.

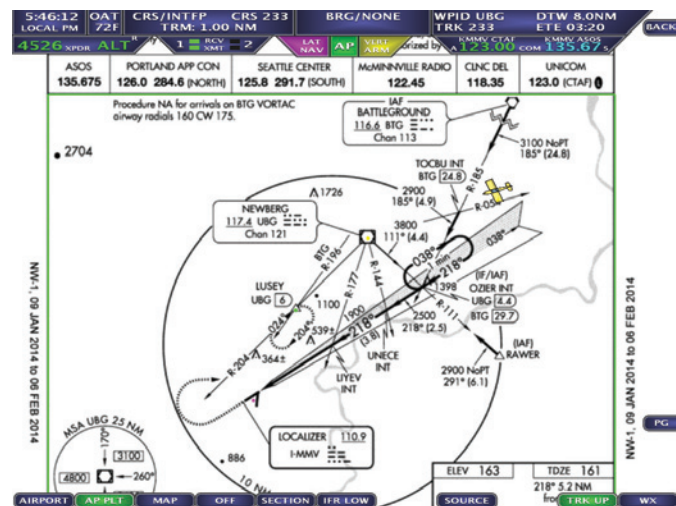


Analog Instruments: Standard Analog 6-Pack Instrument display; including - analog HSI.



Airport/Airspace Information: Complete airport information; including - runways, frequencies, METAR's, TAF's and pattern altitudes.

Airspace Information: Selectable airspace information; including - highlight current boundaries and display the vertical limits. Lets you easily select and display overlapping complicated airspaces, reducing pilot workload.



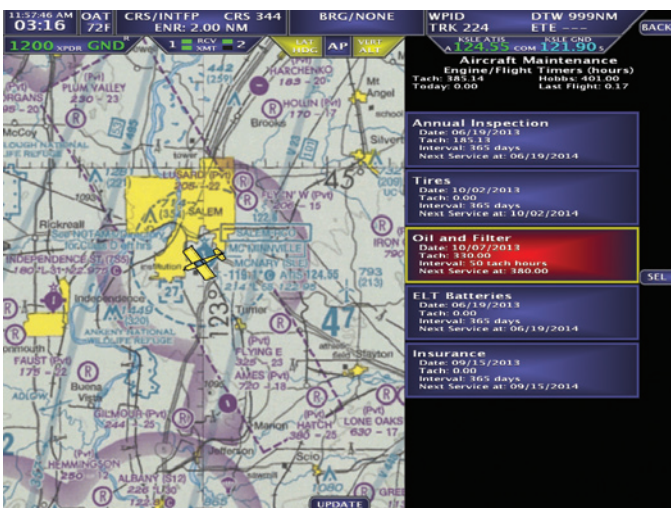
Approach Plates, VFR Sectionals & IFR Charts: Geo-Referenced Approach Plates, Sectionals and IFR Low Charts display your aircraft's current location, as well as traffic. Updated every 28 days, display in full-screen or split-screen mode.



EMERGENCY Glide: Calculates and displays airports that are within your aircraft's engine-out glide range.



GPS and ILS Display: CDI and VDI displayed from external GPS navigator or Nav radio.



Aircraft Maintenance Logs: Keeps track and alerts you when it's time for Oil Changes, Annual Inspections, ELT Batteries, Filters, Brakes or any other user configurable item.



Flight Planning: Loads multi-leg flight plan from an external GPS navigator or allows user input from EFIS Screen.

COMPONENTS

All components are compatible with Dynon's SkyView HDX, SkyView Touch, SkyView Classic, SkyView SE and Advanced Flight System's AF-5000 Series, except where noted.

VHF COM Radio



SkyView's revolutionary COM radio interface will change the way you fly with dedicated buttons for tuning Tower/CTAF, ATIS/WX, ATC, and Ground frequencies.

MODEL#	NOTES	PRICE
SV-COM-C25	Horz. & Vert. versions; 25kHz spacing only.	\$1295
SV-COM-X83	Horz. & Vert. versions; 8.33 kHz spacing.	\$2195

Autopilot Control Panel



Individual buttons for all autopilot modes let you use your SkyView menus exclusively for other features like navigation and flight planning. Built-in 2-axis speed-sensitive trim controller.

MODEL#	NOTES	PRICE
SV-AP-PANEL	AP panel functions not compatible with SkyView SE. However, if mounted remotely, trim motor controller and autopilot auto-trim features are compatible with SkyView SE.	\$550

Knob Control Panel



Dedicated controls for your barometric altimeter setting and the two bugs you use the most.

MODEL#	NOTES	PRICE
SV-KNOB-PANEL	Available in horizontal and vertical versions.	\$250

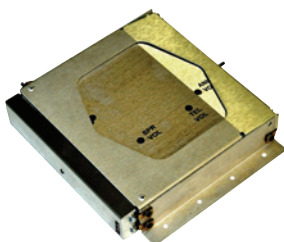
Two-Place Stereo Intercom



Stereo, two-place intercom with audio connectivity for EFIS alerts and music that is usually only found in full-size audio panels.

MODEL#	NOTES	PRICE
SV-INTERCOM-2S	Includes horizontal and vertical faceplates, stereo headset jacks.	\$295

EFIS Controlled Remote Audio Panel



A full audio panel without using valuable panel space. Now featuring IntelliAudio® True Dimensional Sound to hear multiple radios simultaneously, spatially separated in your headset. Also includes Enhanced Bluetooth® with music streaming capability. Other features include legendary 4-place hi-fi stereo IntelliVox® intercom with Soft Mute, two stereo music inputs, split mode, and multiple other inputs. Manufactured by PS Engineering for AFS.

MODEL#	NOTES	PRICE
AF-PDA360EX-R	Compatible with AF-5000 series systems only.	\$1,450

ADAHRS - Primary and Secondary



Provides primary flight instruments, including attitude, airspeed, altitude, magnetic heading, DG, VSI, AOA, G-meter, turn rate, slip/skid ball, OAT, and TAS. Add a secondary ADARS for redundancy and SkyView and AFS EFIS systems automatically cross-check your instruments for you. For aircraft where the desired ADARS placement would result in interference due to proximity to ferrous metal or power, an optional remote magnetometer is available.

MODEL#	NOTES	PRICE
SV-ADARS-200	Primary	\$1200
SV-ADARS-201	Secondary / Backup	\$800
SV-MAG-236	Remote magnetometer (optional)	\$180

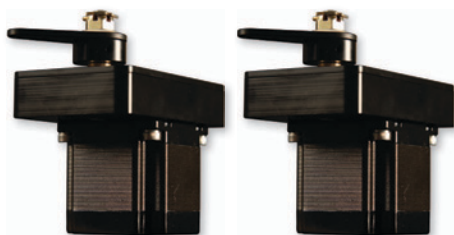
Engine Monitoring Modules



The EMS module receives signals from engine sensors for display on your EFIS. Order the SV-EMS-220 for most engines, SV-EMS-221 for the Rotax 912 iS only. Engine sensor/harness packages for Lycoming/Continental/Jabiru/Rotax engines sold separately. Sensors/harnesses available a-la-carte for other engines. Two modules can be used to monitor dual engines or to provide up to 28 EGT&CHT inputs for large engines (SkyView only).

MODEL#	NOTES	PRICE
SV-EMS-220		\$600
SV-EMS-221	For Rotax 912 iS	\$1050
Probe + Harness packages		\$190-850

Autopilot Servos

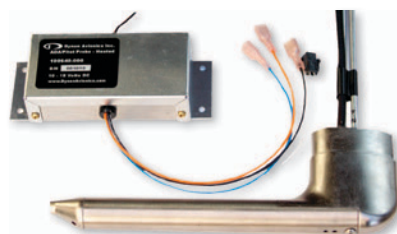


Just add servos to your system to add a fully IFR-capable autopilot. Mounting kits are available for various aircraft.

The optional SV-AP-PANEL adds dedicated autopilot controls. It also features a digital, dual-axis trim controller with proportional speed control and autopilot auto-trim.

MODEL#	NOTES	PRICE
SV32/42/52	Autopilot Servos	\$750 each
Various	Servo Mounting Brackets Kits	\$25-\$75

AOA / Pitot Probes



The rest of GA is starting to see the value of AOA as a major safety-enhancing device. Meanwhile, it's been available for all Dynon and AFS EFIS systems for over a decade. Provides progressive audible approach-to-stall alert.

MODEL#	NOTES	PRICE
100141-000	AOA/Pitot Probe, Unheated (Underwing)	\$200
100667-000	AOA/Pitot Probe, Heated w/controller (Underwing)	\$450
100532-000	AOA/Pitot Probe, Unheated (Boom Mount)	\$200

Backup Batteries



SV-BAT-320 provides at least an hour of power to a single SkyView display and all connected SkyView Network Modules, including the ADARS and EMS. Install one per display for maximum power failure redundancy.

An AF-BAT-3AH is designed to backup a single AF-5000 series screen. The AF-BAT-6AH will backup two screens. They each provide an hour of backup power for their supported configuration.

MODEL#	NOTES	PRICE
SV-BAT-320	Rechargeable Li-Ion battery with internal protection circuit (SkyView only)	\$180
AF-BAT-3AH	3 Amp Hour (AFS-5000 series only)	\$230
AF-BAT-6AH	6 Amp Hour (AFS-5000 series only)	\$395

COMPONENTS

Mode-S Transponders with ADS-B Out



Lightweight TSO'd Mode-S Transponder with TIS traffic reception (US only) and 1090ES ADS-B Out. US customers should choose the SV-XPNDR-261 for 2020 ADS-B mandate compliance (requires SV-GPS-2020 or other suitable position source).

MODEL#	NOTES	PRICE
SV-XPNDR-261	Class 1, FAA 2020 ADS-B Out	\$2200
SV-XPNDR-262	Class 2, <175kts; <15,000 ft. only (Not For US)	\$1800

Traffic/Weather



The SV-ADSB-470 Provides free ADS-B-based weather in the US. Unlike portable ADS-B receivers, you get FULL ADS-B and radar traffic when you pair this with our Mode-S transponder.

MODEL#	NOTES	PRICE
SV-ADSB-470	US Only. Not compatible with SkyView SE.	\$995
AF-XM	XM weather and XM radio for AF-5000 series systems only.	\$995

GPS Receiver Module



WAAS-enabled, high-sensitivity GPS receiver/antenna. Provides multiple updates per second for superior mapping and synthetic vision. Weatherproof for external mounting.

MODEL#	NOTES	PRICE
SV-GPS-250		\$200
SV-GPS-2020	US ADS-B Out 2020 compliant when paired with an SV-XPNDR-261 transponder.	\$590

ARINC 429



Use this interface module for third-party certified IFR navigators like the Avidyne IFD440/540

MODEL#	NOTES	PRICE
SV-ARINC-429	Not compatible with SkyView SE.	\$450

Wi-Fi Adapter for SkyView



Connect SkyView to your mobile devices via the Wi-Fi Adapter, and use apps to flight plan from home and transfer once at the aircraft. Compatible with ForeFlight Mobile, PocketFMS EasyVFR, SkyDemon, Ozrunways, and FltPlan Go. One is required for each SkyView display installed in an aircraft, maintaining system redundancy. Only one per aircraft is used on AF-5000 series systems.

MODEL#	NOTES	PRICE
102405-000	Not compatible with SkyView SE.	\$35

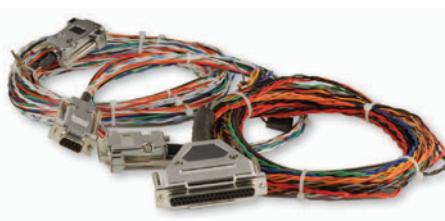
GPS Navigation Mapping



Now included with every display. Pricing for AFS, SkyView and SkyView Touch systems are now \$500 less than previous configurations. US aviation data available at no additional charge; non-US aviation data starting at \$119/year from PocketFMS and Jeppesen.

MODEL#	NOTES	PRICE
SV-MAP-270	SkyView SE does not have mapping features.	\$0

Harnesses/Network Cables



Prefabricated cables interconnect SkyView Network components to make sure your installation goes as smoothly as possible. These connect displays, ADAHRS, EMS, ARINC, COM radio, and Knob & AP control panels. Displays also have their own color-coded harnesses available, as do EMS sensor kits.

MODEL#	NOTES	PRICE
SV-NET-XXX		\$25-70
SV-ETHERNET-3CC	For multiple displays	\$25

Video Input Adapter



Display video from any s-video or composite source. Contact Dynon about SkyView display compatibility before purchase.

MODEL#	NOTES	PRICE
102211-000	For all SkyView systems except SkyView SE.	\$195
AF-Video	Compatible with AF-5000 series only.	\$195

5-Port Network Hub



Join up to 5 SkyView Network Cables together, eliminating complicated splicing, with the SkyView Network Hub.

MODEL#	NOTES	PRICE
SV-NET-HUB		\$50

Builder Support Products



Dynon now manufactures a range of Builder Support Products to help pilots get from "first dream to first flight" as quickly as possible. Examples include an Autopilot Level Button, Dual ADAHRS Mounting Kit, AOA/Pitot/Static Installation Kit, Panel Module Faceplate Blank, ADS-B Harness, Transponder Harness, and Transponder and ADS-B Antennas.

PANEL POSSIBILITIES

You'd be surprised what you can fit in your aircraft when you choose Dynon. Our screen form-factors were designed with minimal bezels, made as narrow as possible. Even the tightest panels have room for two or even three displays, with display options that span from 7" all the way to over 12". The RV-8 panels on this page are examples of what you can accomplish in narrow tandem seat aircraft.

SkyView and SkyView SE displays come in 7" and 10" versions, with SkyView Touch™ available in the 10" model only. SkyView HDX displays - which also have touchscreen - are available in 7" and 10" versions. SkyView and SkyView Touch displays can be mixed in an aircraft. SkyView SE displays can connect to each other, but do not operate with SkyView, SkyView Touch, or SkyView HDX displays.

AF-5000 series displays are available in 8.4", 10.4", and 12.1" display sizes. The 12.1" display is available in two variants, with the AF-5700 omitting the knobs and buttons along the right side to allow it to fit in panels that it wouldn't otherwise. All AF-5000 series displays can be connected to each other in an aircraft. Although SkyView and AF-5000 series displays use the same modules and components, they can not be mixed in a single aircraft panel.

Capabilities

Dynon Avionics glass panel systems comprise most of the avionics in your aircraft, with many components, like the transponder, mounted remotely so they don't take up valuable panel space.

In addition to primary flight instruments and a full-featured engine monitor, Dynon is home to robust mapping and navigation capabilities. Simply point at or touch map features to learn more about them. Your avionics know enough about airports and airspace to let you keep your charts stowed. Terrain, obstacle, weather and traffic data guide you away from danger. An intuitive, robust flight planner lets you quickly route yourself to your \$100 hamburger. You can even send flight plans to your panel via Wi-Fi from popular apps like ForeFlight Mobile.

Equip your SkyView system with a full-featured two-axis autopilot just by adding inexpensive Dynon servos to the aircraft. This saves you thousands over a standalone autopilot. For pilots who value dedicated controls, the optional autopilot control panel ensures autopilot mode control is always at your fingertips.

SkyView's COM radio breaks the mold with a revolutionary pilot interface. Combine its knowledge of airport and ATC frequencies with dedicated buttons for tuning various frequency types, and you can literally fly across the country without ever manually spinning in a frequency. It will change the way you fly. Pair the COM radio with Dynon's Two-Place Stereo Intercom: it outclasses comparable products with ample inputs for SkyView alerts, stereo music, and other technology in your panel.

SkyView's SV-XPNDR-261 integrated Mode-S Transponder is a fully 2020-compliant ADS-B Out device when paired with a high integrity GPS source like our SV-GPS-2020, and it automatically switches AIR/GND modes when you take-off and land. Add our ADS-B receiver to gain even more situational awareness with a FULL traffic and weather portrait.

Equipping for your Mission: IFR vs. VFR

When equipping for IFR, redundancy is paramount. This means you want your critical flight instruments backed up to maintain your ability to aviate and navigate safely in an emergency. You can achieve this redundancy with a second display and ADAHRS, giving you "partial-panel" capability that really isn't partial at all. Additionally, your SkyView system continuously cross-checks multiple ADAHRS against each other to ensure the integrity of your primary flight instruments. Dual data paths in SkyView Network harnesses let your system caution you about emerging wiring problems without loss of function. Equipping at least one display with a backup battery safeguards against electrical failure, and a heated AOA/Pitot probe protects against inadvertent icing.

Many pilots also equip with a third-party nav radio and/or certified GPS - such as the Avidyne IFD440/540 - for legal IFR flight navigation. A completely independent backup set of flight instruments like an EFIS-D10A or EFIS-D6 is also an option to consider.

If you're equipping for VFR flight, the additional real estate provided by a second display is popular for displaying larger PFD, Engine, and Map pages than a single display affords. If you are looking for a simplified VFR experience without map and other features at the most affordable price point, SkyView SE might be more up your alley. No matter what your budget, you'll find that a Dynon-equipped panel will actually save you money and time compared to putting together a panel of disparate other products.

For both VFR and IFR aircraft, SkyView has chart subscription options at unprecedented low prices through partnerships with Seattle Avionics (US), PocketFMS (EU), AvPlan EFB (AU/NZ), and OzRunways (AU).

Depending on the provider/country, procedure charts (plates), airport diagrams, and VFR/IFR en route charts are available.

Light, Sporty

Looking for a simple, clean VFR panel for your sport aircraft? A single 10" SkyView SE Display can do everything you need, with all controls easily accessible on the front panel. The menu system is intuitive and logical to use. The left and right joystick knobs make it fast and easy to make adjustments and navigate the map. Opt for SkyView Touch and it's even easier to use.



A simple VFR aircraft can be fully-equipped, including ADS-B Out capability with just one SkyView SE display, a COM and Intercom in the panel. Other modules are mounted remotely.

Add a second SkyView display for more screen real estate. Dedicated knob and/or autopilot control panels offer direct control of frequently used SkyView features.

Weekend Warrior - Affordable IFR

Just because you're in a sporty tandem aircraft doesn't mean you can't also have the capability to fly through weather. A configuration like this, with dual displays, redundant ADAHRS, battery backup, and an IFR navigator equips you for legal, safe IFR flight.



Dynon displays and modules were designed with narrow bezels that hug the display. This lets us offer form factors that make equipping even the tightest panels possible.

Believe it or not, you can actually fit two AF-5600 10" displays in an RV-8.

PANEL POSSIBILITIES

Cross-Country Cruiser

Want a cross-country panel with more features for long distance travel? A second display makes navigating easier and is also a great backup. Add a control panel with dedicated knobs for Altitude, Barometer, and Heading/Track are always there for quick adjustments. autopilot control panel adds immediate all autopilot modes.



With three expansive displays, you're actually equipped better than many airliners!



A Dynon EFIS-D6 offers an inexpensive independent backup set of flight instruments.



The Airliner

We admit, it's a lot of panel. But it's possible and extremely capable. Dynon's architecture supports configurations that span from a single display all the way up through what is shown here. In fact, the RV-10 that our own Rob Hickman built and flies has this same three-screen configuration. Please ask one of us about it!

QUICK PANELS

FROM DYNON AND ADVANCED FLIGHT SYSTEMS

LET US BUILD YOUR DREAM PANEL

Ask us about our complete and ready-to-install QUICK PANELS for your aircraft. Professionally engineered, configured and tested.

SYSTEM WORKSHEET

Description	Unit Prices	SKYVIEW SYSTEM			AF 5000 SERIES		Yours	Model Numbers
		SE VFR	Touch VFR	HDX IFR	AFS VFR	AFS IFR		
Primary Flight Display (PFD) and Navigation								
7" SkyView SE Display	\$1760	\$1760						SV-D600
7" SkyView Display	\$2610							SV-D700
7" SkyView HDX Display	\$3190			\$3190				SV-HDX800
10" SkyView SE Display	\$3010							SV-D900
10" SkyView Display	\$3510							SV-D1000
10" SkyView Touch Display	\$3905		\$3905					SV-D1000T
10" SkyView HDX Display	\$4490			\$4490				SV-HDX1100
Primary Wiring Harness - SkyView	\$90	\$90	\$90	\$180				SV-HARNESS-D37
Primary Wiring Harness - AFS	\$138				\$138	\$276		53600R3
SV Network Expansion Harness - AFS	\$50				\$50	\$100		53625
12.1" AF-5800 Display	\$5200							AF-5800T
12.1" AF-5700 Display	\$4800							AF-5700T
10.4" AF-5600 Display	\$4200				\$4200	\$4200		AF-5600T
8.4" AF-5500 Display	\$4000					\$4000		AF-5500T
8.4" AF-5400 Display	\$4495							AF-5400T
ADAHRS - Primary	\$1200	\$1200	\$1200	\$1200	\$1200	\$1200		SV-ADAHRS-200
ADAHRS - Second for Redundancy	\$800			\$800		\$800		SV-ADAHRS-201
Remote Magnetometer for SkyView (optional)	\$180							SV-MAG-236
GPS 5Hz Receiver/Antenna	\$200	\$200★	\$200★	\$200	\$200★	\$200		SV-GPS-250
GPS Navigation Mapping Software (now included with display)	\$0		\$0	\$0	\$0	\$0		SV-MAP-270
ARINC-429 Interface Module (for IFR GPS interface)	\$475			\$475		\$475		SV-ARINC-429
SkyView Backup Battery	\$180		\$180	\$180				SV-BAT-320
AF Backup Battery: 3 Amp hr. AF Backup Battery: 6 Amp hr.	\$230 \$395				\$230	\$395		AF-BAT-3AH AF-BAT-6AH
SkyView Knob Control Panel (Vertical or Horizontal available)	\$250		\$250	\$250				SV-KNOB-PANEL (V/H)
Video Input Adapter (SkyView/AFS)	\$195/\$195							102211-000/AF-VIDEO
Wi-Fi Adapter (one per display required)	\$35		\$35	\$70	\$35	\$35		102405-000
Ethernet Cable – 3' (multiple displays only)	\$25			\$25		\$25		SV-ETHERNET-3CC
Network Cables: 1.5' / 3' / 6' / 10' / 15' / 20' / 25' / 30'	\$40/40/45/50/ \$55/60/65/70	\$55	\$40, \$55	\$40, \$40, \$55	\$40, \$55	\$40, \$40, \$55		SV-NET-XXX
Network Splitter (for installing two ADAHRS)	\$65			\$65		\$65		SV-NET-SPL
Network 5 Port Hub (for installing more than two modules)	\$50			\$50		\$50		SV-NET-HUB
Configuration Sub-Totals:		\$3105	\$5755	\$11,310	\$5948	\$11,956		

Dynon AOA/Pitot Probes								
Pitot Probe, Unheated - underwing	\$200	\$200	\$200		\$200			100141-000
Pitot Probe, Heated, w/controller - underwing	\$450			\$450		\$450		100667-000
Pitot Probe, Unheated - boom mount	\$200							100532-000
Configuration Sub-Totals:		\$200	\$200	\$450	\$200	\$450		

★ Required if not using SV-GPS-2020

Additional Non-Dynon Avionics that may be needed: IFR-Certified GPS, Nav Radio, Antennas for COM Radio, ADS-B and Transponder.

Description	Unit Prices	SKYVIEW SYSTEM			AF 5000 SERIES		Yours	Model Numbers
		SE VFR	Touch VFR	HDX IFR	AFS VFR	AFS IFR		
Engine Monitoring								
Standard Engine Monitoring Module / Module for Rotax 912iS	\$600 / \$1050	\$600	\$600	\$600	\$600	\$600		SV-EMS-220 / 221
3' Network Cable (both end connectors)	\$40	\$40	\$40	\$40	\$40	\$40		SV-NET-3CC
Lyc/Cont/Superior, 4-cyl, Carbureted / Fuel Injected	\$700 / \$680		\$680	\$680	\$680	\$680		EMSKIT-L4C / L4F
Lyc/Cont/Superior, 6-cyl, Carbureted / Fuel Injected	\$850 / \$830							EMSKIT-L6C / L6F
Rotax 912 / Rotax 912 iS	\$345 / \$190	\$345						EMSKIT-RTX / RTX iS
Jabiru 2200 / 3300	\$480 / \$600							EMSKIT-J22 / J33
Fuel Flow Transducer	\$200			\$200	\$200	\$200		100403-003
Configuration Sub-Totals:		\$985	\$1320	\$1520	\$1520	\$1520		

Dynon Autopilot								
SV32, SV42, SV52 Servo, Roll and/or Pitch, Regular or Capstan	\$750	\$1500	\$1500	\$1500	\$1500	\$1500		Various
SkyView Autopilot Control Panel (Vertical or Horizontal available)	\$550	★★		\$550		\$550		SV-AP-PANEL (V/H)
Network Servo Wiring Kit - 20'	\$55	\$110	\$110	\$110	\$110	\$110		SV-NET-SERVO
Network 5 Port Hub (for installing more than two modules)	\$50	\$50	\$50	\$50	\$50	\$50		SV-NET-HUB
Network Cable – with both end connectors, 1.5' or 3'	\$40			\$40		\$40		SV-NET-1.5CC
Servo Mounting Brackets Kits - Various	\$75	\$150	\$150	\$150	\$150	\$150		Various
Generic Servo Connection Kit	\$25							101020-000
Configuration Sub-Totals:		\$1810	\$1810	\$2400	\$1810	\$2400		

Transponders, ADS-B In/Out, Traffic and Weather								
Class 1, Mode-S, FAA 2020 ADS-B Out compliant	\$2200	\$2200	\$2200	\$2200	\$2200	\$2200		SV-XPNDR-261
Class 2, Mode-S (<175kts; <15,000 ft)	\$1800							SV-XPNDR-262
High Integrity GPS for 2020 - Compliant ADS-B Out	\$590	\$590	\$590		\$590			SV-GPS-2020
ADS-B UAT Band Traffic and Weather Receiver (US only)	\$995		\$995	\$995	\$995	\$995		SV-ADBS-470
XM Weather + Radio (AF-5X00 Series only)	\$995							AF-XM
Configuration Sub-Totals:		\$2790	\$3785	\$3195	\$3785	\$3195		

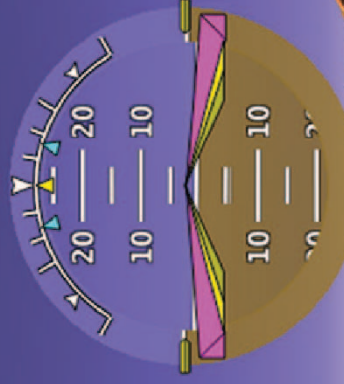
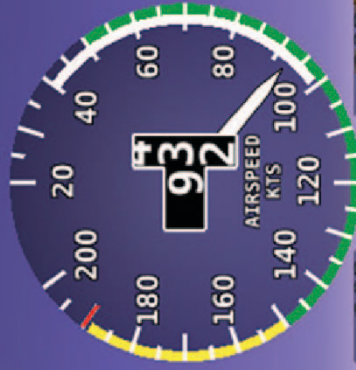
Radios, Intercom and Audio								
VHF COM Radio, 25 kHz (Vertical or Horizontal available)	\$1295	\$1295	\$1295	\$1295	\$1295	\$1295		SV-COM-C25 (V/H)
VHF COM Radio, 8.33 kHz (Vertical or Horizontal available)	\$2195							SV-COM-X83 (V/H)
Network Cable – with both end connectors, 1.5' or 3'	\$40	\$40	\$40	\$40	\$40	\$40		SV-NET-3CC
2-Place Stereo Intercom (Incl. Vertical & Horizontal faceplates)	\$295	\$295	\$295	(3RD Party Audio Panel)	\$295			SV-INTERCOM-2S
EFIS Controlled Remote Audio Panel (AF-5X00 Series Only)	\$1450					\$1450		AF-PDA360EX-R
Configuration Sub-Totals:		\$1630	\$1630	\$1335	\$1630	\$2785		

★★ Can be used for Trim Control when remote-mounted in SkyView SE installations. Autopilot controls are non-functional.

DYNON AVIONICS

SkyView Touch

STRAIGHT ◀AP▶ LEVEL 12000 ALTI 19:22:14 u KSLC 118.300 TWR1 DUAL KSLC 124.750 ATIS1 KSLC



TAS 103 GS 103

315

DA 7278 29.99 IN



VAR /LT
XW --

SKYVIEW
3.6NM
3W5

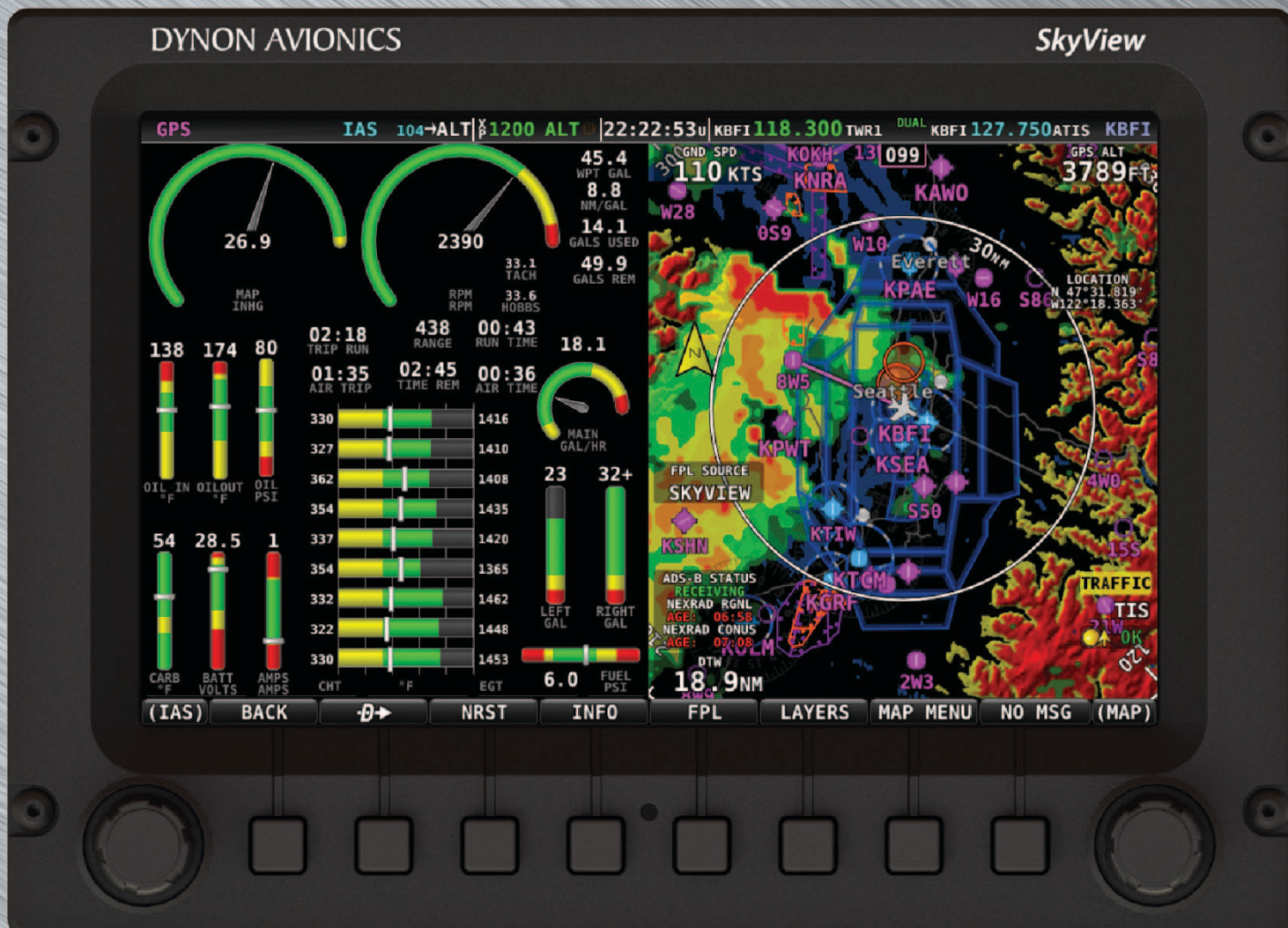
199 HDG

CRS 307

OAT 35F

(CRS) PFD ENGINE MAP AUTOPILOT XPNDR TOOLS SCREEN NO MSG (IAS)

Actual Size SV-D1000 / SV-D1000T



For panel cutouts and mechanical drawings go to:
dynonavionics.com



Actual Size Control Panels



Actual size SkyView HDX 7" Display



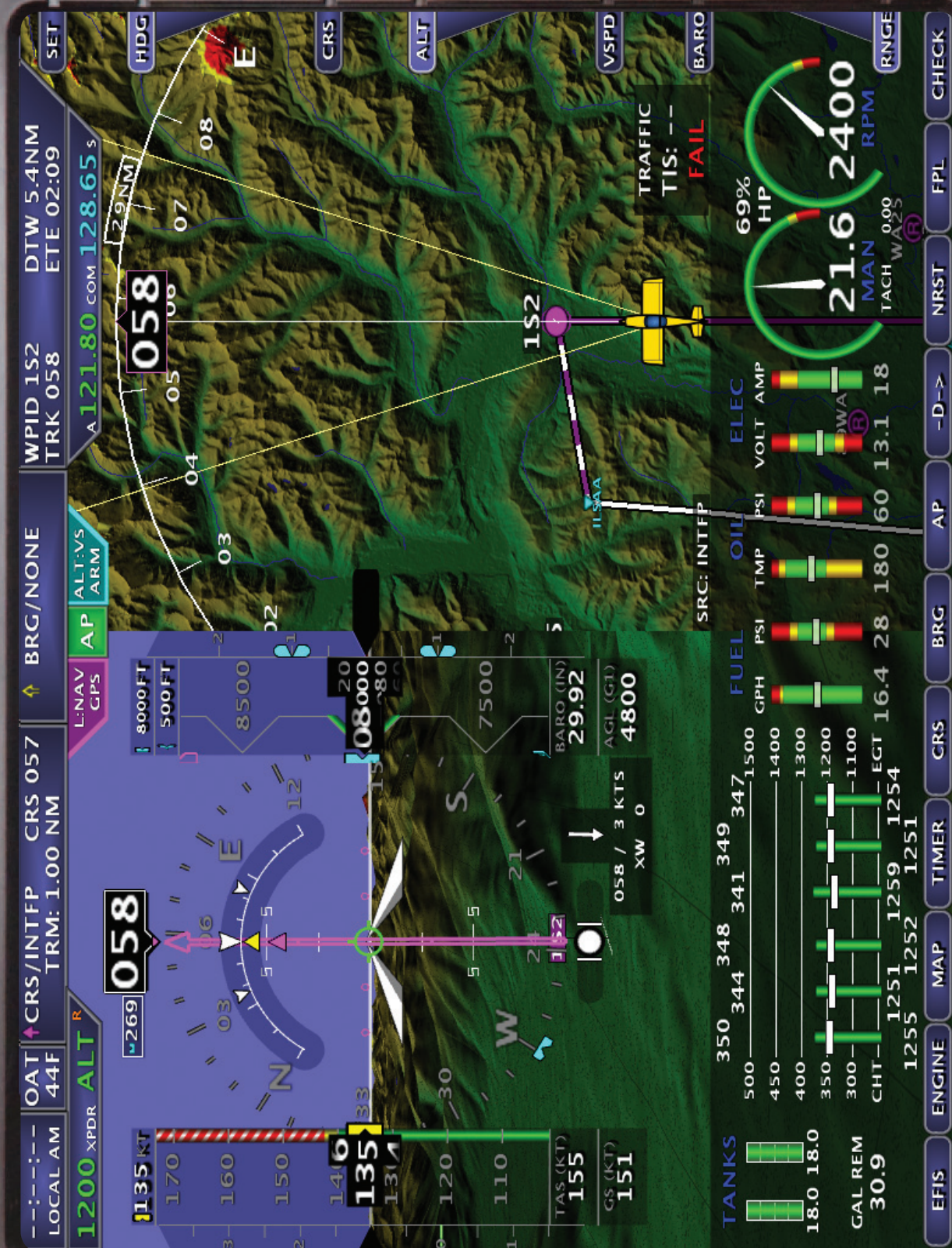
Actual Size Control Panels



Actual size SkyView HDX 10" Display

ADVANCED deck 5600

ADVANCED



Actual size AF-5600 10.4" Display



Actual size AF-5500 8.4" Display



19825 141st PL. NE, Woodinville, WA 98072

(425) 402-0433

ADVANCED™
A DYNON COMPANY

320 S Redwood St, Canby, OR 97013

(503) 263-0037



DYNONAVIONICS.COM