



The **DYNON** Group

The Dynon Group is comprised of Dynon Avionics, Dynon Certified, Advanced Flight Systems, and Trig Avionics.

When you choose products from any Dynon company, you are supporting a US-led business with offices around the world. We design, engineer, manufacture, and support our products primarily in Woodinville, Washington and Canby, Oregon, with additional offices in Fargo, North Dakota.

Trig Avionics - producer of a "Full Stack" of Transponder, Nav, Com, and GPS products that are **Better by Design**, is the latest addition to the Dynon family of companies. Trig has locations throughout Europe, with offices in Edinburgh, Scotland, and Amersfoort, Netherlands.

Transforming aviation through technology

In 2000, we were frustrated with the lack of affordable modern avionics for sport aircraft and decided to do something about it. The result? Dynon led a sea change in modern GA aircraft avionics, equipping over 25,000 sport aircraft owners that previously couldn't imagine an affordable glass cockpit.

SkyView HDX can truly do it all: it's your primary flight instruments, full-featured engine monitor with fuel computer, a class-leading moving map and navigation platform, ADS-B traffic and weather, integrated Mode-S Transponder with ADS-B Out capability, an approach-capable autopilot that offers simplified or expert controls, a revolutionary COM radio, and more. SkyView HDX features a clear, vibrant high-resolution display with breakthrough ergonomics, a refined touch interface, and beautifully-designed all metal and glass construction that is worthy of your aircraft.

Our Values

We are THE avionics company for light aircraft. It's all we do. We constantly innovate and firmly stand behind our products with the industry's best support. We don't think you should have to cut a new panel every time we come up with a new idea, and the product you buy should be supported for years. The first SkyView ADAHRS ever shipped is fully compatible with every SkyView display we've ever shipped.

Many of our engineers are pilots and homebuilders. We fly behind the products we build, and we think it shows. We build most products in-house because we believe that is the most effective way to control quality and cost.

We don't think your avionics should demand that you be an engineer or "beta tester." Though your aircraft may be experimental, your avionics should run stable software that is tested, documented, and a delight to use. The modules that comprise your system should be designed for one another, with robust and redundant data connections that are hardened against failure.

You're a builder, but you're probably not an electrical engineer. Unlike the competition that requires you to build complicated harnesses or buy expensive ones, many Dynon components connect via affordable, prefabricated SkyView Network cables. Other Dynon harnesses are color-coded and match our manuals to help you speed through installation. For those that want the fastest path to flight, our Advanced Flight System division offers the revolutionary **ADVANCEDPANEL** system. These complete avionics panel solutions are professionally engineered, fully assembled, tested, configured, and ready to install in your aircraft. Best of all, almost all of the equipment in the panel, down to the switches, are made by the people that design and manufacture the avionics.

TABLE OF CONTENTS

SKYVIEW SYSTEM

SkyView Introduction	4
SkyView Features	5-6
SkyView HDX	7-8

SYSTEM COMPONENTS, COMPARISON, AND SYSTEM ARCHITECTURE

Components	9-12
Panel Accessories	12
FastTrack Installation Products	13-16
SkyView Architecture	17-18

PANEL CONFIGURATION POSSIBILITIES

Capabilities and Equipping	19
Light and Sporty and Weekend Warrior	20
Cross-Country Cruiser	21
The Airliner	22

SYSTEM PRICING WORKSHEET

Primary Flight Displays and Navigation	23
Engine Monitoring	23
Dynon Autopilot	23
Transponders, ADS-B In/Out, Traffic and Weather	24
Radios, Intercom and Audio	24
Dynon AOA/Pitot Probes	24
FastTrack Mounting Options	24

DYNON BACKUP DISPLAYS

D30 Touchscreen Electronic Flight Display	25
D3 Pocket Panel	25

PANEL PLANNER (ACTUAL SIZE CUT OUTS)

SkyView HDX 10" Display	26
SkyView HDX 7" Display	27
SkyView Panel Accessories	27
SkyView Panel Accessories	28
D30 Touchscreen Electronic Flight Display	28
Dynon Control Panels (Horizontal)	28
SkyView HDX 7" Display	29
Dynon Control Panels (Vertical)	29
SkyView HDX 10" Display	30

DYNON

AP 5524 GND 21:54:52 U KPAA 132.950 TWR2 KPAA 128.650 ATIS KPAA

82 KTS TAS GS 0

1700 FT 200 80 300 100 29.47 IN DA 621 OAT 14c

330 HDG 331

25 25 LEFT RIGHT GAL GAL

MAP 19.2 INHG RPM 2070 GAL/HR 6.3

ROP 48% 994.0 HOBBS 623.0 TACH 50.0 GALS REM

16 191 60 FUEL PSI OIL °F OIL PSI

CHT 361 361 361 361 °F

28.0 BATT VOLTS 12 AMPS

07:56 TIME REM

TRIM 0 10 20 30 40 FLAPS

(HDG) (NRST) (INFO) (FPL) (MENU) (DISPLAY) (NO MSG) (MAP)

BOOST PUMP STROBE

NAV

SkyView™

Technology, Capability, Affordability: FLY DYNON

You want to fly your plane, not mess with a computer. From the beginning, Dynon's pilots and engineers designed SkyView to have a clean and intuitive pilot interface through its on-screen buttons and joystick knobs. The flagship SkyView HDX augments those traditional controls with an intuitive, refined touch interface that is a delight to use.

Whether you're new to glass cockpit technology or fly 777s at work, there's a SkyView panel for you.

right way to interact with your avionics. The touchscreens on SkyView HDX and are designed to complement SkyView's tactile interface, not completely replace it. This allows you to rely on SkyView's complete set of buttons and knobs when you need them most; critical for effective control in turbulence. While you usually hold a smartphone or tablet in your hands, your EFIS screen is at the end of your outstretched arm and it's moving with the aircraft, not with you. These two things conspire to make touch control less than ideal when things get



If you're new to glass, SkyView's "six-pack" flight instrumentation mode lets you fly the gauges you're used to with the digital "EFIS glass cockpit" presentation just a few taps away. Try out the "EFIS" style as you get comfortable. Or not. It's up to you. Learn about SkyView features with extensive training videos on The Dynon Channel at dynonavionics.com/videos.

If you like dedicated tactile controls, you'll be right at home with SkyView. All SkyView displays have a complete set of buttons and knobs - even those that feature a touchscreen. The optional knob control panel assigns the items you adjust most to dedicated knobs to lower pilot workload. Similarly, the Autopilot control panel removes the need to ever use the on-screen menus for Autopilot mode changes. If you have the panel space, these modules are simply the

bumpy. Starting with those challenges, we designed a touch interface specifically for the cockpit. Touch actions are designed to be intuitive and easy to learn, and used in places where they can reduce pilot workload the most. For example, touching the transponder or autopilot status displays instantly enables those features' controls, eliminating the traditional button pushes required to access those menus. Similarly, touching an item that can be adjusted on the PFD instantly reassigns a knob to the touched item, eliminating the need to manually re-task it. Use your fingertips to pan, zoom, and select items on the map - exactly as you'd expect it to.

SkyView HDX displays have a similar installation footprint as original SkyView Classic and SkyView Touch displays, enabling an affordable upgrade path that doesn't require cutting a new panel or even a single wire change.

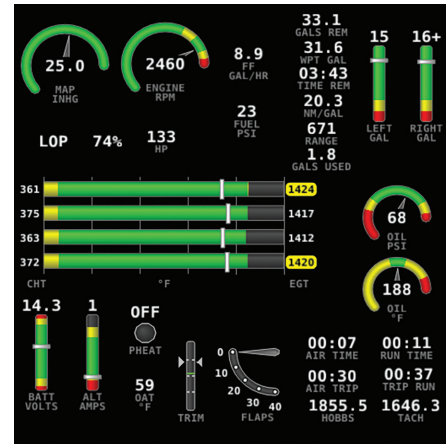
SKYVIEW FEATURES



SkyView's PFD display enhances situational awareness with realistic and accurate 3D depictions of runways, obstacles, terrain, and water.



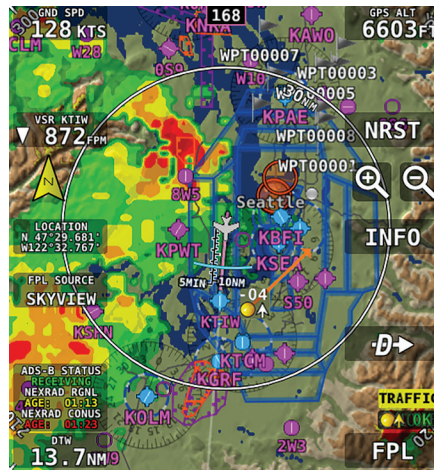
New to glass? SkyView's "six-pack" mode bridges retro analog gauges with the state-of-the-art.



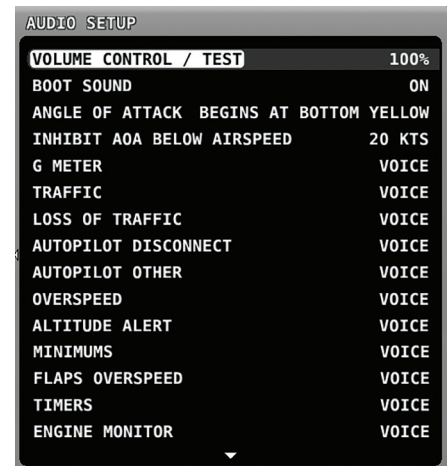
The tools you need to completely manage your power plant, including the industry's only automatic EGT lean/rich mixture detection that requires no pilot action and the most accurate percent power calculations possible.



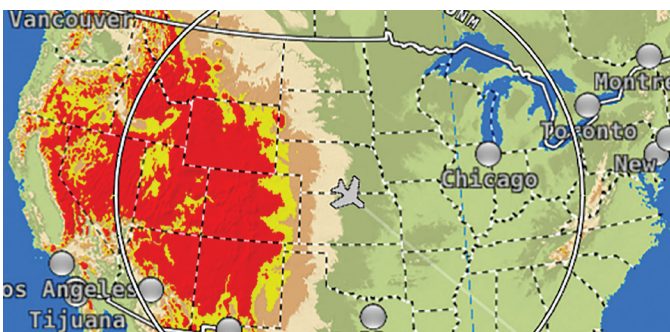
Connect up any device with S-Video or composite output with the optional video input adapter. Perhaps a forward looking taxi camera for your tail-dragger.



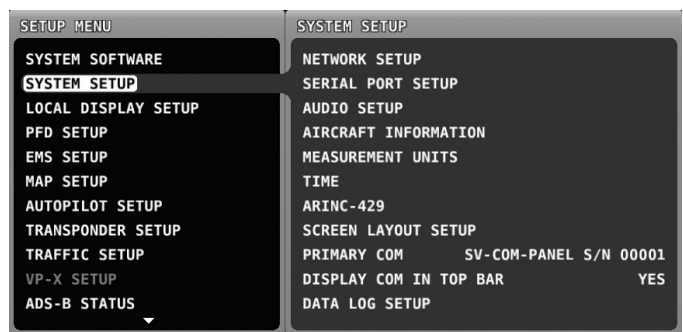
Equip with the SV-ADS-B-472 to gain ADS-B-based graphical NEXRAD weather radar imagery, text METARs, TAFs, winds aloft, traffic, and more.*



Voice alerts detail specific warning and caution conditions as they occur. A tone that gains intensity as your angle-of-attack increases helps you grease your landings and avoid stalls before they happen.

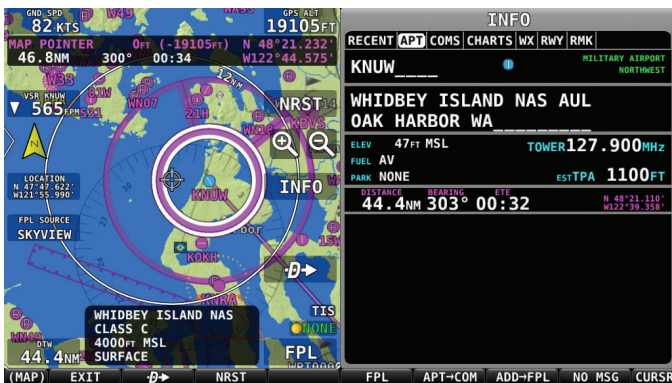


SkyView's free worldwide terrain data is the highest resolution available. Terrain colors are designed to look similar to charts while you're en route. They alert in vibrant yellow and red when altitude clearance is a factor.



You shouldn't have to be a computer programmer to install your avionics: An intuitive, hierarchical setup menu helps you configure your system with ease.

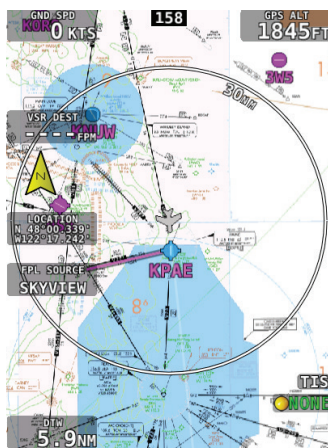
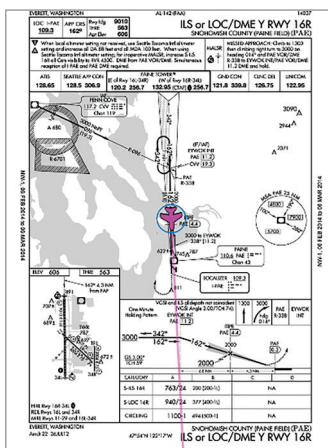
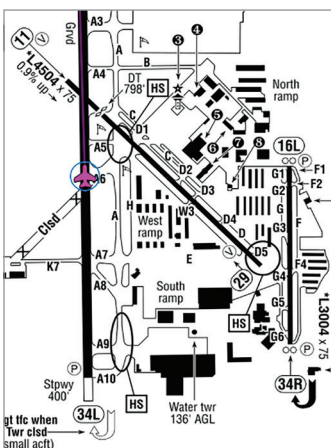
*where ADS-B in services are available



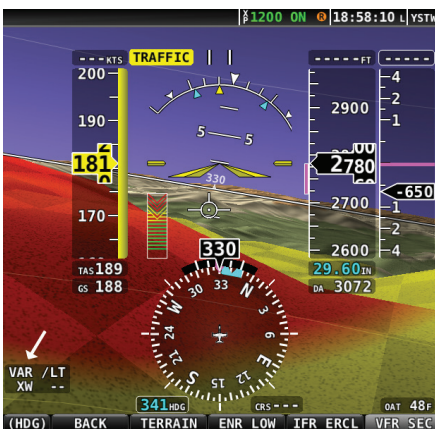
Point at airports, airspaces and more for instant information about them right on the map. From there, one button press gets you virtually all the information available for airports, including TPA, frequencies, services, charts, weather, and even the airport facility directory remarks.



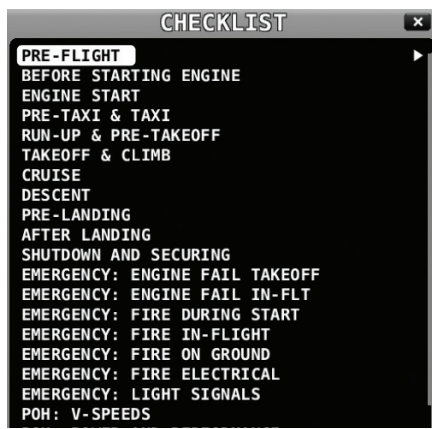
SkyView's navigation engine flies like you would. It anticipates waypoints and turns just before them to avoid needless overshoots. You can even display the graphics and waypoints from external IFR GPS flight plans.



With procedure charts (plates), airport diagrams (including ~5000 Flight Guide diagrams in the US), IFR en route charts, VFR sectionals, and SkyView's own map, you can truly achieve a paperless cockpit at the lowest prices in the industry.



Predictive terrain alerts dynamically shade terrain in yellow or red, based on the aircraft's projected flight path.



Checklists help remove paper clutter from the aircraft. Add as many checklists as you like - they're easily created and edited on any computer.



Plan your flight at home using your favorite planning application, then save time at the airplane by sending the planned route to your SkyView system via the Wi-Fi Adapter.

SKYVIEW DISPLAYS

Actual Size. It's BIG. The New 12" SkyView HDX



SkyView HDX






SkyView HDX is the flagship SkyView system from Dynon, the market leader in experimental and light sport avionics. HDX features improved displays, beautiful design, unrivaled control ergonomics, and an intuitive and refined touch interface.



10" Display



7" Display

-  **Clear, Vibrant Displays:** SkyView HDX features brighter, higher-resolution HD touchscreen displays with wider viewing angles and improved anti-reflective properties for the sharpest picture ever.
-  **Beautiful Design:** SkyView HDX's modern, elegant design features robust metal and glass construction that is worthy of your aircraft.
-  **Unrivaled Control Ergonomics:** SkyView HDX expands the SkyView philosophy of combining full physical controls with a touchscreen. SkyView HDX's angled control panel allows for natural hand positioning, reducing fatigue. The wide, sculpted ledge allows you to anchor your hand for precise control in turbulence. New knobs have positive and crisp movement, and all controls are now fully-backlit for night flight.
-  **Improved Touch Interface:** SkyView HDX features icon-driven touch controls and simplified screen navigation for reduced workload. The new engine monitor instrument band along the bottom of the screen affords an ideal instrument scan. The expansive glass display features edge-to-edge touchability with no bezel in the way.
-  **Capable and Compatible:** SkyView HDX utilizes the same components and modules as existing SkyView systems. It also features a similar mounting footprint and wiring as other SkyView displays, allowing easy upgrades for pilots already flying behind SkyView.

SPECIFICATIONS

Display Resolution: 800 x 1280 Pixels

Power: 2.40A @12V DC

SV-HDX1200 (12" Display)

Dimensions:

11.69" x 8.37" (W x H)
3.54" Overall Depth
1.91" Aft Panel Depth

Weight: 4.50 lb. (2.04 kg)

SV-HDX1100 (10" Display)

Dimensions:

10.31" x 7.1" (W x H)
3.1" Overall Depth
1.9" Aft Panel Depth

Weight: 3.35 lb. (1.52 kg)

SV-HDX800 (7" Display)

Dimensions:

7.64" x 5.59" (W x H)
3.21" Overall Depth
1.94" Aft Panel Depth

Weight: 2.75 lb. (1.25 kg)

COMPONENTS

All components are compatible with SkyView HDX, as well legacy SkyView Classic, SkyView Touch, and SkyView SE systems, except where noted.

VHF COM Radio



High Contrast OLED Display

SkyView's revolutionary COM radio interface will change the way you fly with dedicated buttons for tuning Tower/CTAF, ATIS/WX, ATC, and Ground frequencies.

Weight: SV-COM-PANEL: 0.38 lb. (0.17 kg), SV-COM-760: 0.56 lb. (0.25 kg), SV-COM-T8: 0.77 lb. (0.35 kg)
Power: 0.2A Receive, 2.0A Transmit @12V DC for SV-COM-T8

NOTES:

- SV-COM-PANEL: **New OLED display.** Vertical & Horizontal versions available.
- SV-COM-760: 25 kHz spacing.
- SV-COM-T8: 8.33 kHz spacing, TSO'd transceiver.

Autopilot Control Panel



Individual buttons for all autopilot modes let you use your SkyView menus exclusively for other features like navigation and flight planning. Built-in 2-axis speed-sensitive trim controller.

Weight: 0.3 lb. (0.15 kg)
Power: 0.05A @12V DC

NOTES:

- SV-AP-PANEL: AP panel button features require use of autopilot in expert mode. Panel button features not compatible with SkyView SE. However, when mounted remotely, trim motor controller and autopilot auto-trim features are compatible with SkyView SE.

Knob Control Panel



Dedicated controls for your barometric altimeter setting and the two bugs you use the most.

Weight: 0.4 lb. (0.18 kg)
Power: 0.07A @12V DC

NOTES:

- SV-KNOB-PANEL: Available in horizontal and vertical versions.

Two-Place Stereo Intercom



Stereo, two-place intercom with audio connectivity for EFIS alerts and music that is usually only found in full-size audio panels.

Weight: 0.45 lb. (.204 kg)
Power : 0.1A @12V DC

NOTES:

- SV-INTERCOM-2S: Includes horizontal and vertical faceplates, stereo headset jacks.

Trig NAV/COM & Audio Panels



The TX56 family of NAV/COM Radios are available in 8.33 kHz or 25 kHz COM spacing.

Weight: 2.78 lbs (1.26 kg)
Power: (at 14V) receive: 265 mA transmit: 2A



Full-featured audio panels for 2-4 passengers (TMA44) and 2-6 passengers (TMA45). Features vary by model.

Weight: 1.3lb (0.59 kg)
Power: Typical 350 mA @ 14V (speaker off), 600 mA (speaker on).

ADAHRS - Primary and Secondary



Provides primary flight instruments, including attitude, airspeed, altitude, magnetic heading, HSI, VSI, AOA, G-meter, turn rate, slip/skid ball, OAT, and TAS. Add a secondary ADAHRS for redundancy: SkyView and AFS EFIS systems will automatically cross-check your instruments for you. For aircraft where the desired ADAHRS placement would result in interference due to proximity to ferrous metal or power, an optional remote magnetometer is available.

Weight: 0.5 lb. (0.2 kg) for SV-ADAHRS-200/201, 0.46 lb. (0.21 kg) for SV-MAG-236
Power: 0.15A @12V DC

NOTES:

- SV-ADAHRS-200: Primary
- SV-ADAHRS-201: Secondary / Backup
- SV-MAG-236: Remote magnetometer (optional)

Engine Monitoring Modules



The EMS module receives signals from engine sensors for display on your EFIS. Order the SV-EMS-220 for most engines, SV-EMS-221 for Rotax iS and select other canbus-enabled engines.. Engine sensor/harness packages for Lycoming/Continental/Jabiru/Rotax engines sold separately. Sensors/harnesses available à la carte for other engines. Two modules can be used to monitor dual engines or to provide up to 28 EGT&CHT inputs for large engines.

Weight: 0.63 lb. (0.29 kg)
Power: 0.11A @12V DC

NOTES:

- SV-EMS-220: For Lycoming, Continental and other traditional aircraft engines
- SV-EMS-221: For Rotax iS series and ECU-equipped ULPower engines
- Probe + Harness packages available

Autopilot Servos



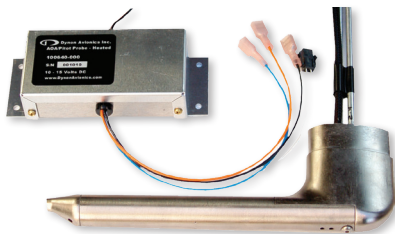
Just add servos to your system to add a fully IFR-capable autopilot. Mounting kits are available for various aircraft. The optional SV-AP-PANEL adds dedicated autopilot controls. It also features a digital, dual-axis trim controller with proportional speed control and autopilot auto-trim.

Weight: 2 lb. (0.9 kg) for SV32, 3 lb. (1.4 kg) for SV42, 4 lb. (1.8 kg) for SV52
Power: 1.3A / 2A / 2.8A @12V DC (at 100% torque)

NOTES:

- SV32/42/52 Autopilot Servos available in Standard Output Arm, Long Output Arm or Capstan, cable-controls.
- Various Servo Mounting Bracket Kits: Mounting kits are available for popular aircraft models

AOA / Pitot Probes



The rest of GA is starting to see the value of AOA as a major safety-enhancing device. Meanwhile, it's been available for Dynon EFIS systems for over a decade. It provides progressive audible approach-to-stall alert.

Weight: 100141-000: 0.35 lb. (0.18 kg), 100667-000 with controller: 0.72 lb. (0.33 kg)
Power: 10A @12V DC (at Maximum Heat)

NOTES:

- 100141-000: AOA/Pitot Probe, Unheated (Underwing)
- 100667-000: AOA/Pitot Probe, Heated w/controller (Underwing)
- 100532-000: AOA/Pitot Probe, Unheated (Boom Mount)

COMPONENTS

Mode-S Transponder with ADS-B Out



Lightweight TSO'd, Class 1, Mode-S Transponder with TIS traffic reception (US only) and 1090ES ADS-B Out. When paired with the Dynon SV-GPS-2020 or other suitable position source, the SV-XPNDR-263 is an FAA rule-compliant ADS-B Out solution.

Weight: 0.66 lb. (0.30 kg)
Power: 0.4A @12V DC

NOTES:

- SV-XPNDR-263: Class 1, FAA 2020 ADS-B Out

Traffic/Weather



The dual band SV-ADSB-472 receives ADS-B traffic via 978 MHz (UAT) and 1090 MHz, and also receives NEXRAD, METARS, TAFS, and other weather information. Unlike portable ADS-B receivers, you get FULL ADS-B and radar traffic when you pair this with our SV-XPNDR-261 and SV-GPS-2020.

Weight: 0.3 lb. (0.12 kg)
Power: 0.05A @12V DC

NOTES:

- SV-ADSB-472: Not compatible with SkyView SE.

GPS Receiver Module



WAAS-enabled, high-sensitivity GPS receiver/antenna. Provides multiple updates per second for superior mapping and synthetic vision. This module is weatherproof for external mounting.

Weight: 0.44 lb. (0.2 kg) for SV-GPS-250, 0.47 lb. (0.21 kg) for SV-GPS-2020
Power: 0.1A @12V DC

NOTES:

- SV-GPS-2020: US ADS-B Out 2020 compliant when paired with an SV-XPNDR-261 transponder.
- SV-GPS-250: Not recommended for use in US when equipping for 2020 ADS-B Out

IFR Connectivity: ARINC 429



Use this interface module for third-party certified IFR navigators like the Avidyne IFD440/540.

Weight: 0.4 lb. (0.18 kg)
Power: 0.1A @12V DC

NOTES:

- SV-ARINC-429: Not compatible with SkyView SE.

Wi-Fi Adapter for SkyView



Connect SkyView to your mobile devices via the Wi-Fi Adapter, and use apps to flight plan from home and transfer once you're at the aircraft. Compatible with ForeFlight Mobile, PocketFMS EasyVFR, SkyDemon, Ozrunways, and FltPlan Go. One is required for each SkyView display installed in an aircraft, maintaining system redundancy.

Weight: 0.006 lb. (0.003 kg)
Power: 0.1A @12V DC

NOTES:

- 104571-000: Not compatible with SkyView SE.

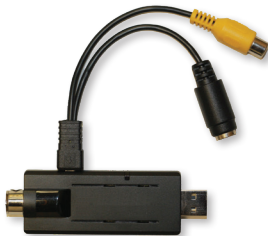
Backup Battery



SV-BAT-320 provides at least an hour of power to a single SkyView display and all connected SkyView Network Modules, including the ADAHRS and EMS. Install one per display for maximum power failure redundancy.

Weight: 0.8 lb. (0.4 kg) - SV-BAT-320
Power: 1.0A @12V DC (while charging)

Video Input Adapter



Display video from any s-video or composite source. Contact Dynon about SkyView display compatibility before purchase.

Weight: 0.14 lb. (0.065 kg)
Power: 0.15A @12V DC

PANEL ACCESSORIES



Autopilot Disconnect Button

Internally illuminated (backlit) option to add a panel-mounted disconnect button to disengage SkyView's integrated Autopilot.



Transponder IDENT Button

Allows the pilot to activate the Dynon transponder's "Ident" feature without the need to open the Transponder menu on SkyView.



Autopilot Yaw Damper Button

Allows the pilot to activate or deactivate the Dynon autopilot yaw damper feature without the need to open the autopilot menu on SkyView.



Autopilot LEVEL Button

Internally illuminated (backlit) dedicated button for activating the "LEVEL" mode in SkyView's integrated Autopilot.



USB Port Panel Mount

Available in 1', 2', or 3' lengths, the USB port allows you to easily update SkyView software and databases.



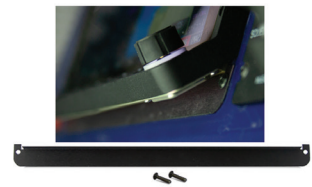
Dimmer Knob Module

Allows the brightness level of SkyView displays, and Dynon Avionics panel units, to be adjusted incrementally.



Panel Module Faceplate (Blank)

Includes 4 panel mount screws and 1 blank faceplate.



Panel Cover Plate For SV-HDX1100

Panel cover plate for filling the small gap below the HDX when upgrading from a D1000 display to an HDX.

FastTrack

INSTALLATION PRODUCTS

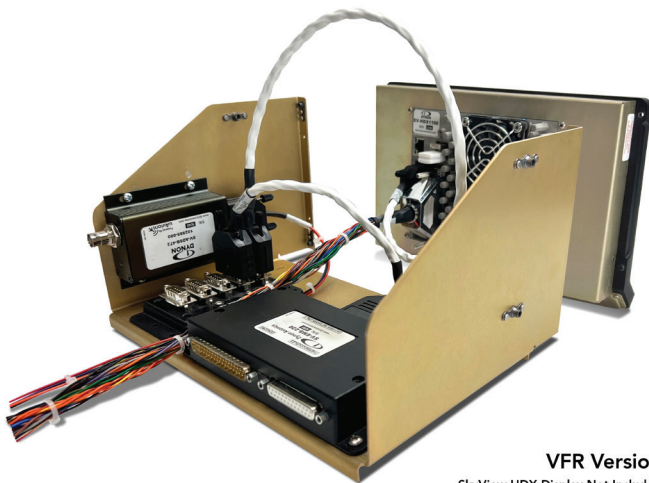
Until now, builders had to decide where to locate each avionics module or component in their airplane, design custom brackets to mount each, fabricate those custom brackets, and finally attach the brackets and modules to the airplane. **FastTrack** dramatically simplifies these tasks.

Dynon has created a line of time-saving products that reduce or eliminate the design, fabrication, and wiring efforts normally required when installing any avionics system in your airplane.

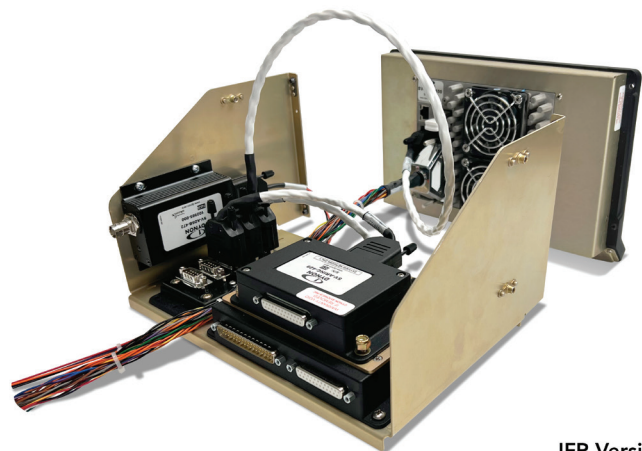
FastTrack Essentials Packages

Dynon's **FastTrack** Essentials Packages are pre-assembled kits that provide homebuilders with many of the core modules every system requires in a single product. Included modules come mounted to a FastTrack Universal Module Mounting Tray Kit for SV-HDX1100, and most are already networked together with included SkyView Network cables and SkyView Network Hub.

The builder removes the **FastTrack** Essentials package from its box, fastens the assembly to the instrument panel with 4 rivets, and installs their SV-HDX1100 display by threading the 4 provided mounting screws into the provided nutplates. Building out a panel has never been easier.



VFR Version
SkyView HDX Display Not Included

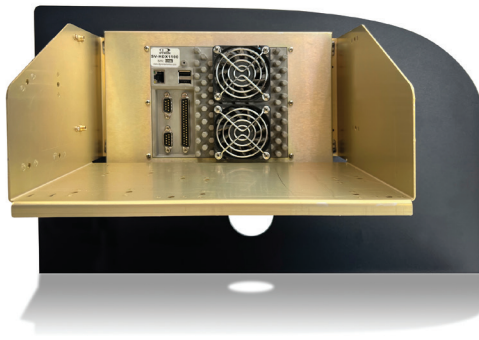


IFR Version
SkyView HDX Display Not Included

FastTrack Essentials Packages are available in VFR and IFR editions. The VFR edition comes with the SV-EMS-220 EMS Module, SV-ADSB-472 ADS-B In Receiver, SV-NET-HUB SkyView Network Hub, SV-NET SkyView Network Cables, SkyView Display Harness, and the ADS-B Receiver Harness Kit. The IFR edition adds an SV-ARINC-429 module for IFR navigator connectivity.

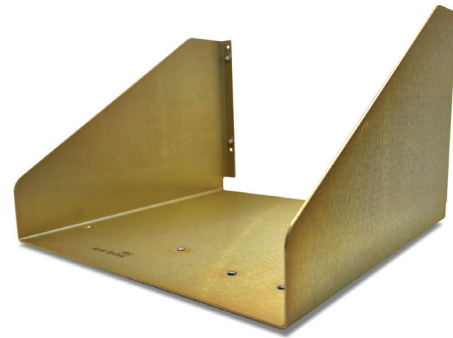
FastTrack Module Mounting Systems

Dynon's **FastTrack** series of module mounting system products eliminate the planning and effort required to locate various modules in your airplane, design and fabricate the custom module mounting bracketry, and the time it takes to install these brackets in your airplane. Simply install these Dynon's prefabricated FastTrack mounting products to your airplane, then fasten the SkyView modules using the pre-installed nut plates and included hardware.



Module Mounting Tray Kit for SV-HDX1100 / SV-HDX1200

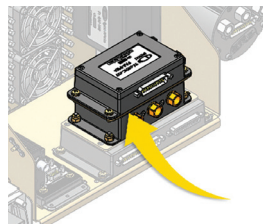
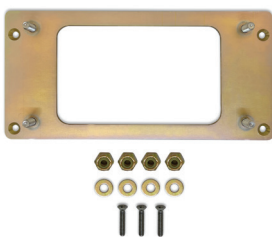
The Module Mounting Tray Kit provides the installer with a quick and simple method for mounting many of the commonly used SkyView electronic modules right behind the 10" and 12" Sky-View HDX displays on the instrument panel.



Module Mounting Tray For SV-HDX800

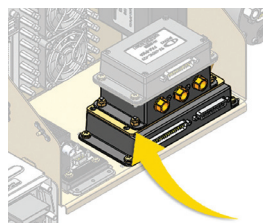
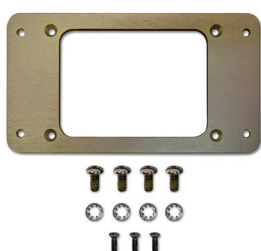
The SV-HDX800 Module Mounting Tray simplifies both the new and retrofit installations by providing the means for mounting the SV-HDX800 display and its backup battery. In addition, it provides mounts for either a COM transceiver or a Transponder. This product is not compatible with SV-COM-760 Transceiver.

ADAHRS to ADAHRS/ARINC Module Stacking Kit



The ADAHRS to ADAHRS/ARINC Module Stacking Kit can be used to attach an SV-ARINC-429 module directly to the top of an SV-ADAHRS-200/201 module. It can also be used to mount two ADAHRS together.

EMS to ADAHRS/ARINC Module Stacking Kit



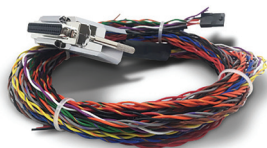
The EMS to ADAHRS/ARINC Module Stacking Kit can be used to attach either an ADAHRS or an ARINC-429 module directly to the top of the EMS module.

FastTrack Wire Harnesses and Network Cables

SAVE TIME AND ELIMINATE THE POSSIBILITY OF WIRING ERRORS

Dynon's prefabricated wiring harnesses connect SkyView modules and accessories to the system using color coded aviation grade Tefzel® wire to simplify installation. These harnesses are manufactured by Dynon to exacting standards and are functionally tested to eliminate any risk of wiring errors.

Display Harness



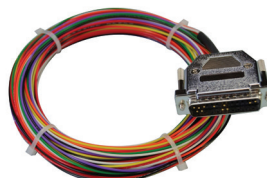
The Display Harness features a fully terminated 37 pin D-sub connector at one end that mates with the main connector on the back of the display.

ADS-B Receiver Harness Kit



This kit contains color-coded aviation grade Tefzel® wire and everything needed to mate with and operate the SV-ADSB-472 ADS-B Receiver.

Transponder Harness Kit



This kit contains color-coded aviation grade Tefzel® wire and everything needed to mate with and operate the SV-XPNDR-261/262 Transponders.

Intercom Harness



A complete audio harness solution to connect a SV-INTERCOM-2S to a Dynon COM radio, SkyView displays, headsets, and other audio inputs.

Network Cables

To help ensure that your installation goes as smoothly as possible, prefabricated SkyView Network Cables are available in a broad range of lengths to accommodate the interconnection of your SkyView Network components no matter how close or how far they are mounted from each other.

Connector to Connector Cables



- SV-NET-6inCC Network Cable, connector 2 ends, 6" Tefzel
- SV-NET-8inCC Network Cable, connector 2 ends, 8" Tefzel
- SV-NET-10inCC Network Cable, connector 2 ends, 10" Tefzel
- SV-NET-1CC Network Cable, connector 2 ends, 1' Tefzel
- SV-NET-1.5CC Network Cable, connector 2 ends, 1.5' Tefzel
- SV-NET-2CC Network Cable, connector 2 ends, 2' Tefzel
- SV-NET-3CC Network Cable, connector 2 ends, 3' Tefzel
- SV-NET-6CC Network Cable, connector 2 ends, 6' Tefzel

Connector to Pins Cables



- SV-NET-10CP Network Cable, connector 1 end, 10' Tefzel
- SV-NET-15CP Network Cable, connector 1 end, 15' Tefzel
- SV-NET-20CP Network Cable, connector 1 end, 20' Tefzel
- SV-NET-25CP Network Cable, connector 1 end, 25' Tefzel
- SV-NET-30CP Network Cable, connector 1 end, 30' Tefzel

FastTrack Installation Accessories

OTHER PRODUCTS TO GET YOU IN THE AIR FASTER

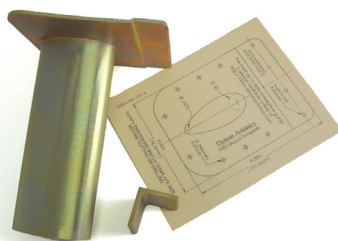
Dynon **FastTrack** Installation Accessories help builders get from “first dream to first flight” as quickly as possible. These products help eliminate obstacles that builders often face as they craft their dream panel.

Pitot/Static/AOA Pneumatic Install Kit



All the pneumatic tubing and connectors you need to install your Pitot, Static, and AOA. Includes static ports.

Pitot Mount Bracket



Mounting bracket for Dynon Avionics AOA / Pitot Tube (both heated and unheated versions).

Transponder & ADS-B Receiver Antenna



Rod type Transponder and ADS-B Receiver Antennas (1090 MHz and 978 MHz).

SkyView HDX Panel-mount screws



A packet of 30 replacement panel mount screws to help install your SkyView System.

CORGI AVIATION Trim Servos NEW



Corgi Aviation's affordable servos drive trim surfaces and other systems in homebuilt and other light aircraft applications.

Connector Kits



D-sub 9-pin, 15-pin, and 25-pin Male and Female Connector kits for your SkyView System.

Network Splitter



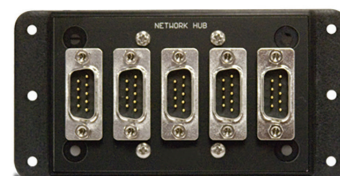
The 12 inch long SkyView Network Splitter cable allows one SkyView Network connection to be split into two.

Ethernet Cables



The 3' long Ethernet Cable allows the connection of two SkyView display ethernet ports with each other.

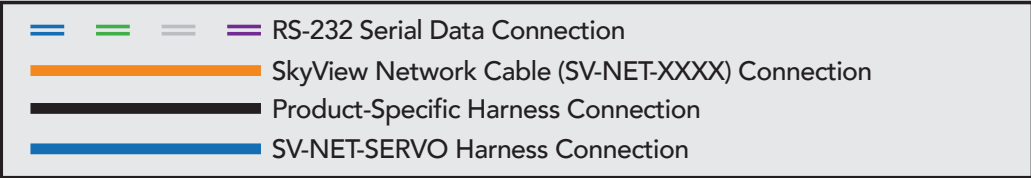
5-Port Network Hub



Join up to 5 SkyView Network Cables together, eliminating complicated splicing, with the SkyView Network Hub.

ORDER ONLINE AT SHOP.DYNON.COM

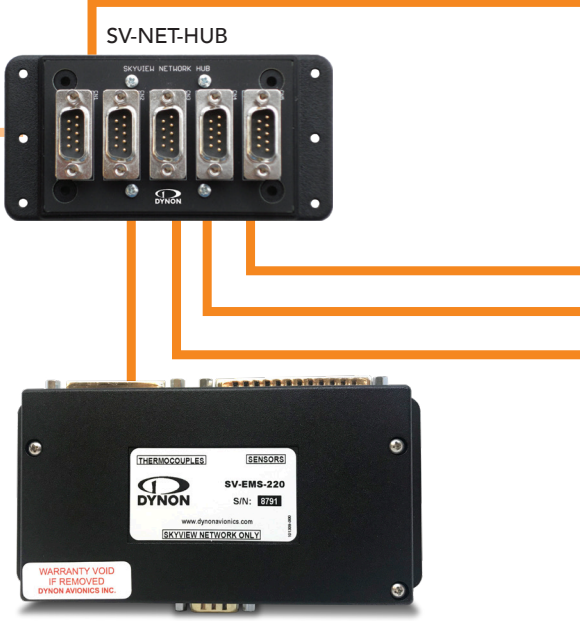
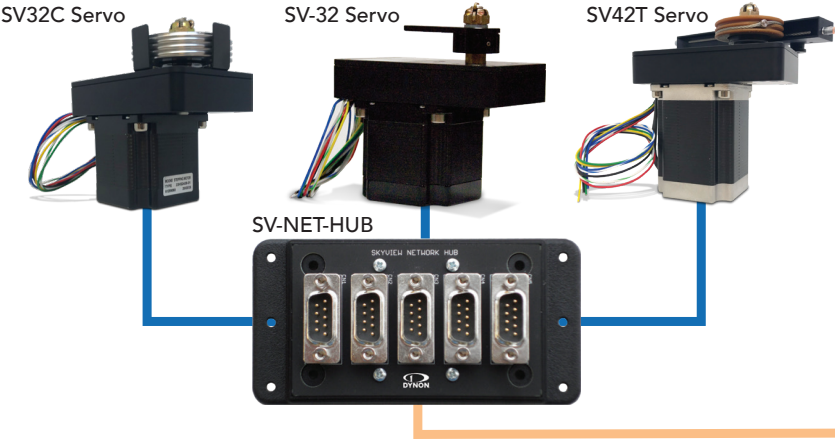
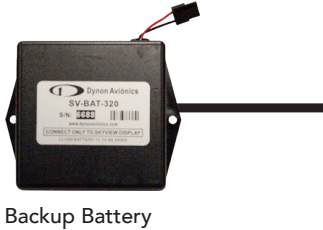
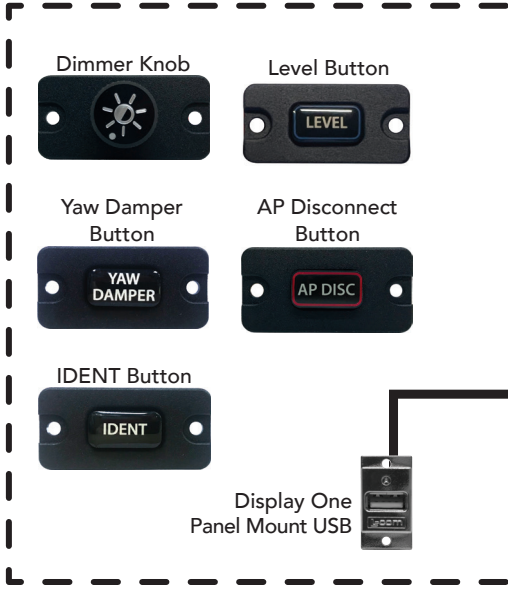
SKYVIEW ARCHITECTURE



1 end w/D-sub connector; 1 end w/pins only	
SV-NET-10CP	10' long
SV-NET-15CP	15' long
SV-NET-20CP	20' long
SV-NET-25CP	25' long
SV-NET-30CP	30' long

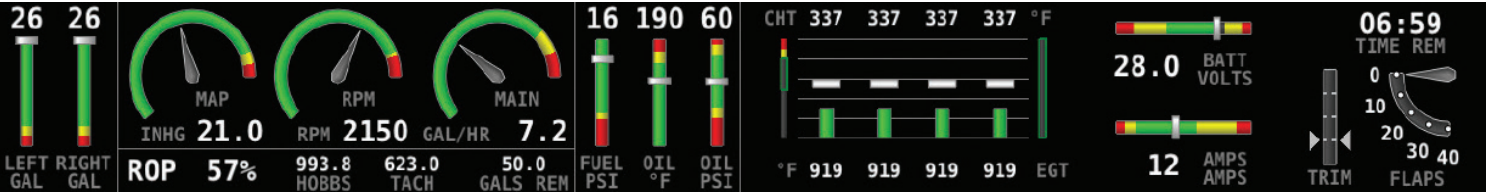
9-pin D-Sub Connectors fitted to both ends	
SV-NET-6inCC	6" long
SV-NET-8inCC	8" long
SV-NET-10inCC	10" long
SV-NET-1CC	12" long
SV-NET-1.5CC	18" long
SV-NET-2CC	2' long
SV-NET-3CC	3' long
SV-NET-6CC	6' long

Product-Specific Harnesses	
SV-HARNESS-D37	3' long (6' P&G)
SV-NET-SERVO	20' long
SV-HARNESS-XPNDR	15' long
SV-HARNESS-ADSB	15' long
SV-HARNESS-INT	15' long



Lyc/Cont/ Superior	4 Cylinder	6 Cylinder	Jabiru	Rotax
Carbureted	EMSKIT-L4C	EMSKIT-L6C	EMSKIT-J22	EMSKIT-RTX
Fuel Injected	EMSKIT-L4F	EMSKIT-L6F	EMSKIT-J33	EMSKIT-RTXiS

SV-EMS-220 /221 Engine & Systems Monitoring



Example Engine & Systems Monitoring Layout

INSTRUMENT PANEL

SV-HDX1100 10" Touchscreen Display



SV-HDX800 7" Touchscreen Display



Display Two Panel Mount USB



SERIAL PORT 1

SERIAL PORT 2

SERIAL PORT 3

SERIAL PORT 4

SERIAL PORT 5



SV-XPNDR-263 Transponder
ADS-B Out Compliance



SV-ADSB-472 Receiver
Traffic & Weather



Trig TX56 Series NAV/COM

Or Other RS-232 Serial Devices



SV-GPS-2020 (WAAS)
ADS-B Out Compliant GPS



Backup Battery

SV-COM Transceiver
Remote-mount VHF Radio



SV-MAG-236
Remote Magnetic Compass



SV-ADAHRS-201 (Secondary)
Attitude & Pitot Static



SV-ADAHRS-200 (Primary)
Attitude & Pitot Static



SV-ARINC-429
IFR Navigation Interface

This is an example layout, actual system configurations may be slightly different.

PANEL POSSIBILITIES

You'd be surprised what you can fit in your aircraft when you choose Dynon. Our screen form-factors were designed with minimal bezels, made as narrow as possible. Even the tightest panels have room for two or even three displays, with display options in 7" and 10" form factors. The RV-8 panels on this page are examples of what you can accomplish in narrow tandem seat aircraft.

Capabilities

Dynon Avionics glass panel systems comprise most of the avionics in your aircraft, with many components, like the transponder, mounted remotely so they don't take up valuable panel space.

In addition to primary flight instruments and a full-featured engine monitor, SkyView contains robust mapping and navigation capabilities. Simply point at or touch map features to learn more about them. Your avionics know enough about airports and airspace to let you keep your charts stowed. Terrain, obstacle, weather and traffic data guide you away from danger. An intuitive, robust flight planner lets you quickly route yourself to your \$100 hamburger. You can even send flight plans to your panel via Wi-Fi from popular apps like FlyQ and ForeFlight Mobile.

Equip your SkyView system with a full-featured two-axis autopilot just by adding affordable Dynon servos to the aircraft. This saves you thousands over a standalone autopilot. For pilots who value dedicated controls, the optional autopilot control panel ensures autopilot mode control is always at your fingertips.

SkyView's COM radio breaks the mold with a revolutionary pilot interface. Combine its knowledge of airport and ATC frequencies with dedicated buttons for tuning various frequency types, and you can literally fly across the country without ever manually spinning in a frequency. It will change the way you fly. Pair the COM radio with Dynon's Two-Place Stereo Intercom: it outclasses comparable products with ample inputs for SkyView alerts, stereo music, and other technology in your panel.

SkyView's SV-XPNDR-261 integrated Mode-S Transponder is a fully 2020-compliant ADS-B Out device when paired with a high integrity GPS source like our SV-GPS-2020, and it automatically switches AIR/GND modes when you takeoff and land. Add our dual band ADS-B receiver to gain even more situational awareness with a FULL traffic and weather portrait.

Equipping for your Mission: IFR vs. VFR

When equipping for IFR, redundancy is paramount. This means you want your critical flight instruments backed up to maintain your ability to aviate and navigate safely in an emergency. You can achieve this redundancy with a second display and ADAHRS, giving you "partial-panel" capability that really isn't partial at all. Additionally, your SkyView system continuously cross-checks multiple ADAHRS against each other to ensure the integrity of your primary flight instruments. Dual data paths in SkyView Network harnesses let your system caution you about emerging wiring problems without loss of function. Equipping at least one display with a backup battery safeguards against electrical failure, and a heated AOA/Pitot probe protects against inadvertent icing.

Many pilots also equip with a third-party NAV radio and/or certified GPS - such as the Avidyne IFD440/540 - for legal IFR flight navigation. An independent set of backup flight instruments is another option to consider

If you're equipping for VFR flight, the additional real estate provided by a second display is popular for displaying larger PFD, Engine, and Map pages than a single display affords. No matter what your budget, you'll find that a Dynon-equipped panel will actually save you money and time compared to putting together a panel of disparate other products.

For both VFR and IFR aircraft, SkyView has chart subscription options at unprecedented low prices through partnerships with Seattle Avionics (US), PocketFMS (EU), AvPlan EFB (AU/NZ), OzRunways (AU), and Airmate (S Amer).

Depending on the provider/country, procedure charts (plates), airport diagrams, and VFR/IFR en route charts are available.

Light, Sporty

Looking for a simple, clean VFR panel for your sport aircraft? A single 7" or 10" SkyView SE Display can do everything you need, with all controls easily accessible on the front panel. The menu system is intuitive and logical to use. The left and right knobs make it fast and easy to make adjustments.



A simple VFR aircraft can be fully-equipped, including ADS-B Out capability with just one SkyView HDX display, a COM and Intercom in the panel. Other modules are mounted remotely.

Add a second SkyView display for more screen real estate. Dedicated knob and/or autopilot control panels offer direct control of frequently used SkyView features.

Weekend Warrior - Affordable IFR

Just because you're in a sporty tandem aircraft doesn't mean you can't also have the capability to fly through weather. A configuration like this, with dual displays, redundant ADAHRS, battery backup, and an IFR navigator equips you for legal, safe IFR flight.



Dynon displays and modules were designed with narrow bezels that hug the display. This lets us offer form factors that make equipping even the tightest panels possible. Add a second SkyView display for more screen real estate and redundancy. Dedicated knob and/or autopilot control panels offer direct control of frequently-used features.

PANEL POSSIBILITIES

Cross-Country Cruiser

Want a cross-country panel with more features for long distance travel? A second display makes navigating easier and is also a great backup. Add a control panel with dedicated knobs for Altitude, Barometer, and Heading/Track so they are always there for quick adjustments. The autopilot control panel adds immediate control of all autopilot modes.



With three displays, you're actually equipped better than many airliners!



The Airliner

We admit, it's a lot of panel. But it's possible and extremely capable. Dynon's architecture supports configurations that span from a single display all the way up through what is shown here. In fact, the Glasair Sportsman that some of our employees built and fly has a similar three-screen configuration as this RV-10 example. Please ask one of us about it!



ADVANCEDPANEL

FROM DYNON AND ADVANCED FLIGHT SYSTEMS

LET US BUILD YOUR DREAM PANEL

Ask us about our complete and ready-to-install **ADVANCEDPANELs** for your aircraft. Professionally engineered, configured, and tested.

SYSTEM WORKSHEET

Description	Light, Sporty	Weekend Warrior	Cross-Country Cruiser	The Airliner	Your System	Model Numbers
Flight Displays and Navigation						
7" SkyView HDX Display *	✓					SV-HDX800
10" SkyView HDX Display	✓	✓	✓ ✓	✓ ✓ ✓		SV-HDX1100
12" SkyView HDX Display						SV-HDX1200
Primary Wiring Harness - SkyView *	✓ *	✓	✓ ✓	✓ ✓ ✓		SV-HARNESSES-D37
ADAHRS - Primary *	✓ *	✓	✓	✓		SV-ADAHRS-200
ADAHRS - Second for Redundancy		✓		✓		SV-ADAHRS-201
Remote Magnetometer for SkyView (optional)						SV-MAG-236
GPS 5Hz Receiver/Antenna **		✓ **		✓ **		SV-GPS-250
D30 Touchscreen Electronic Flight Display		✓	✓	✓		103961-000
Standby EFIS Power Harness for D30		✓	✓	✓		104749-000
Internal Backup Battery for D30		✓	✓	✓		104243-000
ARINC-429 Interface Module (for IFR GPS interface)		✓		✓		SV-ARINC-429
SkyView Backup Battery	✓	✓	✓	✓		SV-BAT-320
SkyView Knob Control Panel (Vertical or Horizontal)	✓	✓	✓	✓		SV-KNOB-PANEL (V/H)
Video Input Adapter						102211-000/AF-VIDEO
Wi-Fi Adapter (one per display required)		✓	✓ ✓	✓ ✓ ✓		104571-000
Ethernet Cable – 3' (multiple displays only)		✓	✓	✓		SV-ETHERNET-3CC
Network Cables: 6" - 30' *	Various Sizes *	Various Sizes	Various Sizes	Various Sizes		SV-NET-XXX
Network Splitter (for installing two ADAHRS)		✓		✓		SV-NET-SPL
Network 5 Port Hub (for installing more than two modules)		✓		✓		SV-NET-HUB

Engine Monitoring						
Standard Engine Monitoring Module/ Module For Rotax iS series	✓	✓	✓	✓		SV-EMS-220 / 221
Lyc/Cont/Superior, 4-cyl, Carbureted / Fuel Injected		✓	✓			EMSKIT-L4C / L4F
Lyc/Cont/Superior, 6-cyl, Carbureted / Fuel Injected				✓		EMSKIT-L6C / L6F
Rotax 912 / Rotax iS Series	✓					EMSKIT-RTX / CANBUS
Jabiru 2200 / 3300						EMSKIT-J22 / J33
Fuel Flow Transducer		✓	✓	✓		100403-003
Network Cable – with both end connectors, 8" - 3'	Various Sizes	Various Sizes	Various Sizes	Various Sizes		SV-NET-XXXCC

Dynon Autopilot						
SV32, SV42, SV52 Servo, Roll and/or Pitch, Regular or Capstan	✓ ✓	✓ ✓	✓ ✓	✓ ✓		Various
SkyView Autopilot Control Panel (Vertical or Horizontal available)	✓	✓	✓	✓		SV-AP-PANEL (V/H)
Network Servo Wiring Kit - 20'	✓ ✓	✓ ✓	✓ ✓	✓ ✓		SV-NET-SERVO
Network 5 Port Hub (for installing more than two modules)	✓		✓			SV-NET-HUB
Network Cable – with both end connectors, 10" - 3'	Various Sizes	Various Sizes	Various Sizes	Various Sizes		SV-NET-XXXCC
Servo Mounting Brackets Kits - Various	Various	Various	Various	Various		Various
Generic Servo Connection Kit						101020-000

Description	Light, Sporty	Weekend Warrior	Cross-Country Cruiser	The Airliner	Your System	Model Numbers
Transponders, ADS-B In/Out, Traffic and Weather						
Class 1, Mode-S, FAA 2020 ADS-B Out compliant	✓	✓	✓	✓		SV-XPNDR-263
High Integrity GPS for 2020 - ADS-B Out Compliant	✓		✓			SV-GPS-2020
ADS-B Dual Band Traffic and Weather	✓	✓	✓	✓		SV-ADSB-472
Transponder / ADS-B In Harnesses	✓	✓	✓	✓		102629-000 / 102558-000

Radios, Intercom and Audio						
VHF COM Radio, 25 kHz / 8.33kHz (Vert. or Hor. COM Panel versions available)	✓	✓	✓	✓		SV-COM-760 / T8 + SV-COM-PANEL (V/H)
Network Cable – with both end connectors, 10" - 3'	✓	✓	✓	✓		SV-NET-XXXCC
2-Place Stereo Intercom (Incl. Vertical & Horizontal faceplates)	✓	✓	✓			SV-INTERCOM-2S
Intercom Harness	✓	✓	✓			102791-000
Trig Audio Panels		✓	✓	✓		TMA44 / TMA45

Dynon AOA/Pitot Probes						
Pitot Probe, Unheated - underwing	✓		✓			100141-000
Pitot Probe, Heated, w/controller - underwing		✓		✓		100667-000
Pitot Probe, Unheated - boom mount						100532-000

FastTrack Mounting Options						
When using FastTrack Mounting Trays & Stacking Kits, SkyView Network Cable lengths are often reduced from above examples.						
FastTrack Essentials Packages (VFR/IFR) - See Page 13 for Details						104357-000 / 104359-000
Universal Module Mounting Tray Kit for SV-HDX1100 / SV-HDX1200						104071-000
COM/XPNDR Module Mounting Kit						104031-000
Module Mounting Tray For SV-HDX800						104067-000
EMS to ADAHRS/ARINC Module Stacking Kit						103917-000
ADAHRS to ADAHRS/ARINC Module Stacking Kit						102532-000

★ A 7" SkyView HDX system with PFD and Mapping Includes display, ADAHRS, required harnesses. Add V-GPS-250 if not already equipping with ADS-B Out compliant SV-GPS-2020.

★★ Required if not using SV-GPS-2020

Additional Non-Dynon Avionics that may be needed: IFR-Certified GPS, Nav Radio, COM Radio Antenna.

BACKUP DISPLAYS

PANEL MOUNTED



Note: The D30 does not include a direction indicator.

D30

TOUCHSCREEN ELECTRONIC FLIGHT DISPLAY

Meet the latest addition to the Dynon panel-mounted avionics product line: The Dynon D30 Touchscreen Electronic Flight Display. The D30 serves as a backup set of flight instruments in SkyView HDX systems.

The D30 features a large 4", sunlight readable, high resolution touchscreen display. An integrated backup battery provides up to 5 hours of runtime in the event of aircraft power failure, giving pilots confidence that they have access to critical flight information when it is needed most.

The D30 is a robust set of backup instruments, including attitude, airspeed, altitude, vertical speed, turn rate, and slip/skid indications.

Compact at only 3.7" deep, the D30 mounts in a slightly modified 3-1/8" instrument hole via a docking ring mounting bracket. The bracket allows for one-screw installation and removal of the instrument.

D3 POCKET PANEL

PORTABLE TOUCHSCREEN EFIS WITH SYNTHETIC VISION

Meet the D3 - the newest edition of Dynon's popular Pocket Panel. Now featuring Synthetic Vision, the D3 Dynon Pocket Panel lets pilots supplement their often unreliable legacy instrumentation with an affordable, portable electronic attitude indicator. Both of the included cockpit mounting options require no tools, allowing the D3 to be deployed in any aircraft without regulatory approval.

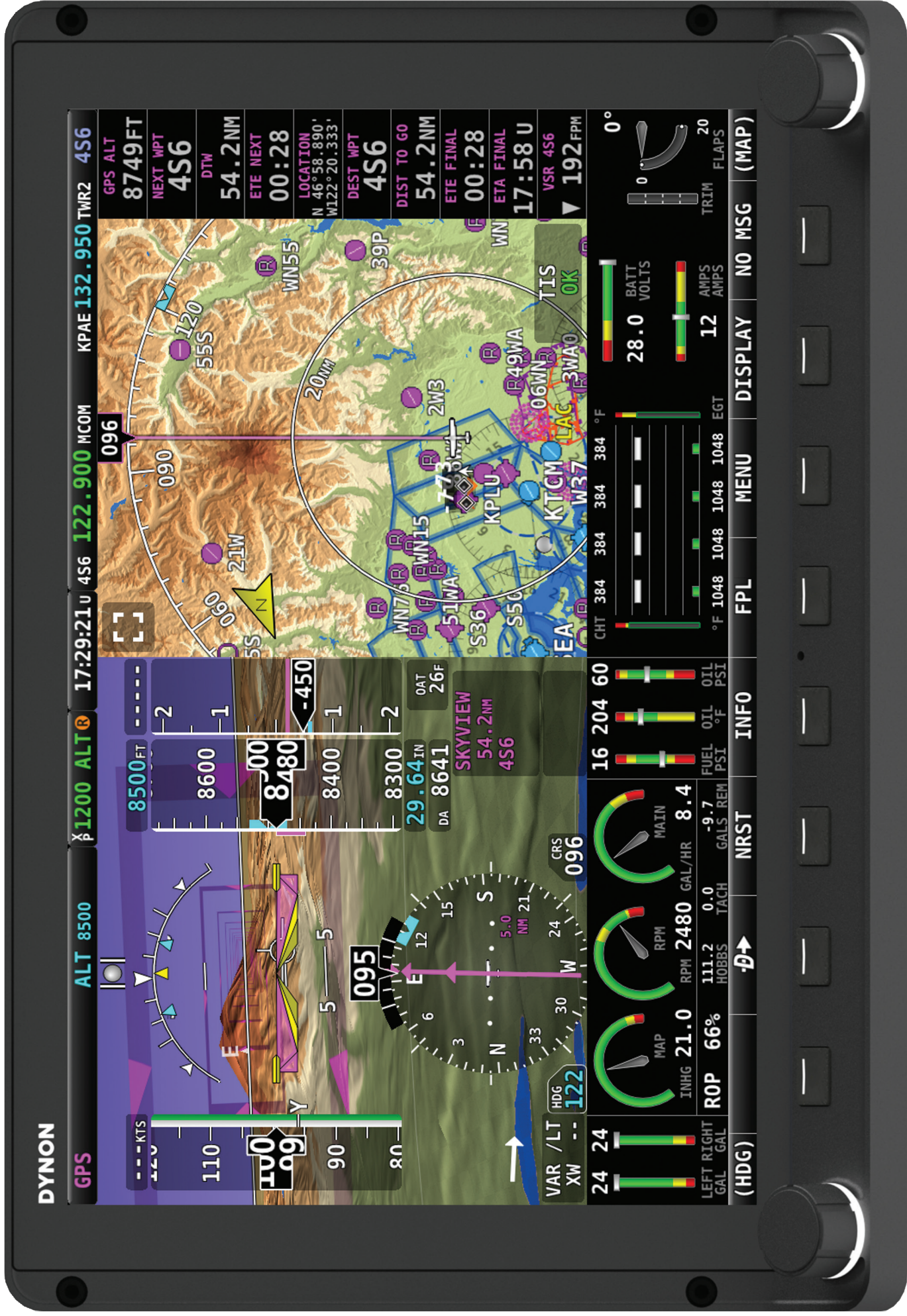
INCLUDED: AC Wall Charger, DC Vehicle Charger, Charging Cable, Mounting Cradles (two included), RAM® Portable Suction Cup Mount, Portable "Pinch" Mount for Standard 3-1/8" Instrument Hole, and External GPS Antenna (not required in many cockpits).

FEATURES

- Synthetic Vision
- Intuitive Touchscreen Interface
- Improved Brightness for Superior Sunlight Readability
- Accurate Pitch and Roll: A True Artificial Horizon
- Proven Dynon Attitude Sensing Engine
- Internal Li-Ion Battery for Extended Cord-Free Use
- Two Versatile Mounts Included
- GPS Ground Speed
- GPS Ground Track
- GPS Altitude and Vertical Speed
- Turn Rate
- Slip/Skid Ball
- G-Meter Page with Min and Max Indications
- Adjustable Brightness for Night Flight
- Truly pocket sized: Approximately 3 1/2" x 3 1/4" x 1"

PORTABLE





Actual Size SkyView SV-HDX1100 10" Display
For planning use only. Do not use as a panel-cutting template.



Actual Size SkyView SV-HDX800 7" Display



Trig NAV/COM TX56



Trig Audio Panel TMA45



IDENT Button



Yaw Damper Button



Panel Mount USB Port (1 for each display)



AP Disconnect Button



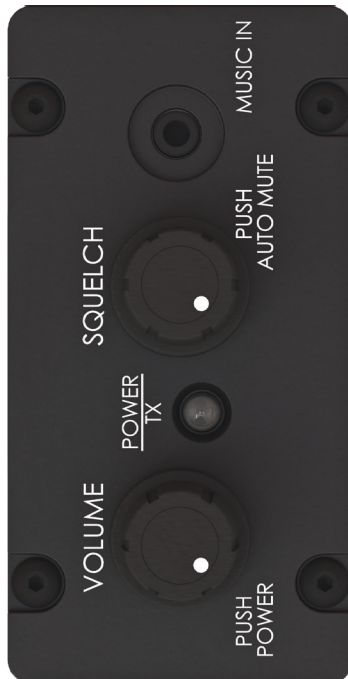
Dimmer Knob



Level Button



Actual Size
D30 Touchscreen
Electronic Flight
Display



Actual Size Control Panels

For planning use only. Do not use as a panel-cutting template.



Actual Size SkyView SV-HDX800 7" Display



Actual Size Control Panels

For planning use only. Do not use as a panel-cutting template.

The DYNON Group



Woodinville, Washington • Canby, Oregon • Edinburgh, Scotland • Amersfoort, Netherlands

DYNON.COM



@dynonavionics